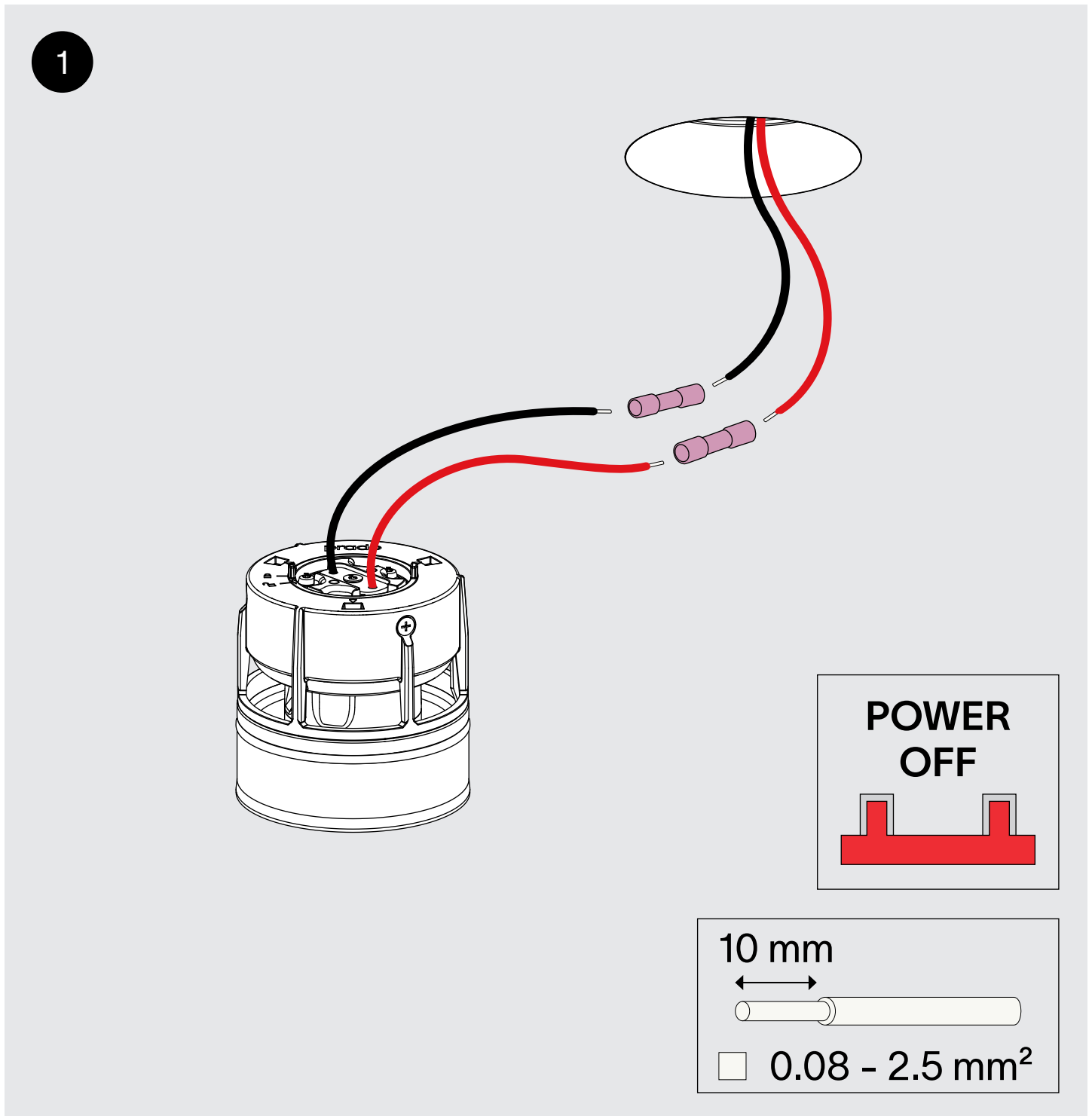


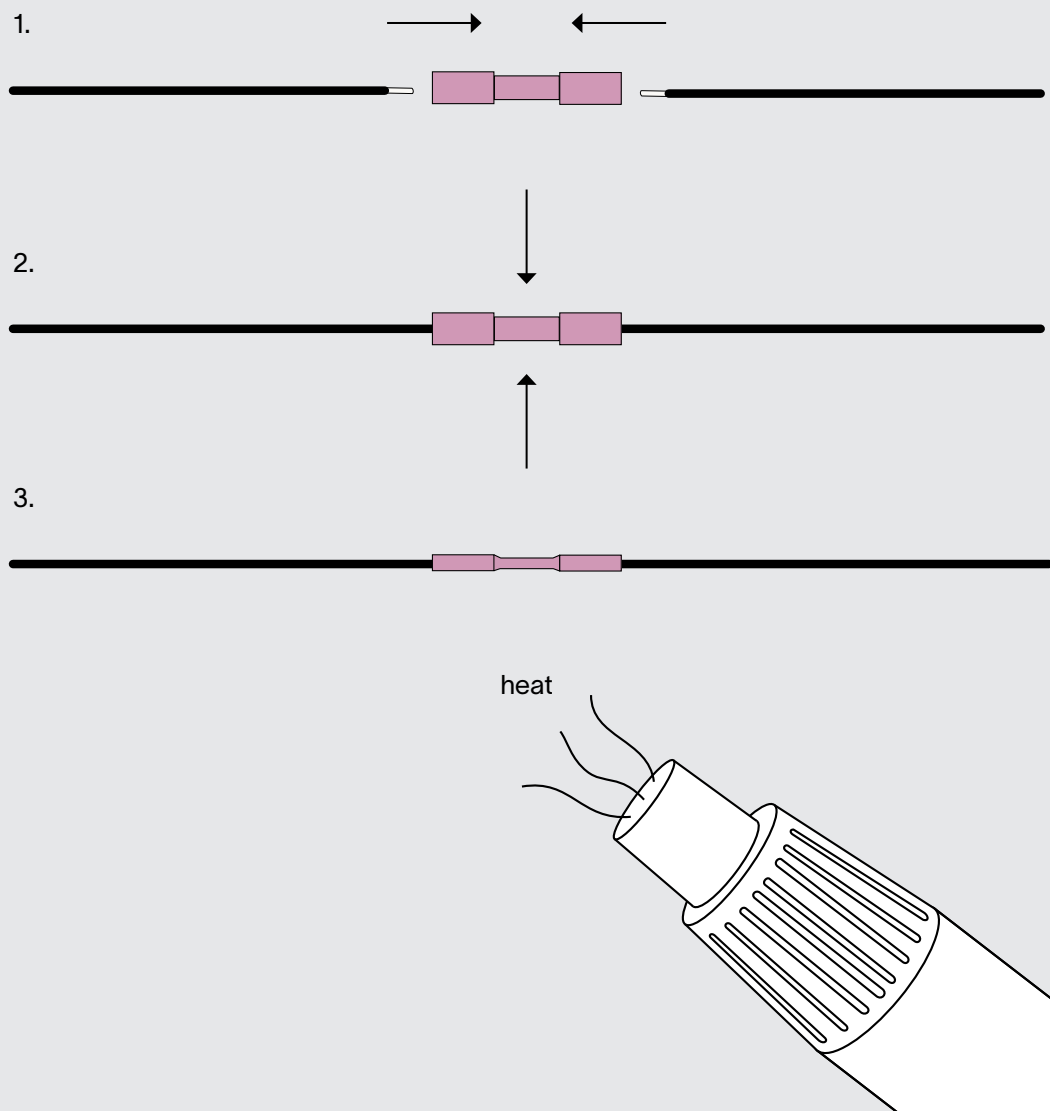
light + ventilation | mini

installation instruction

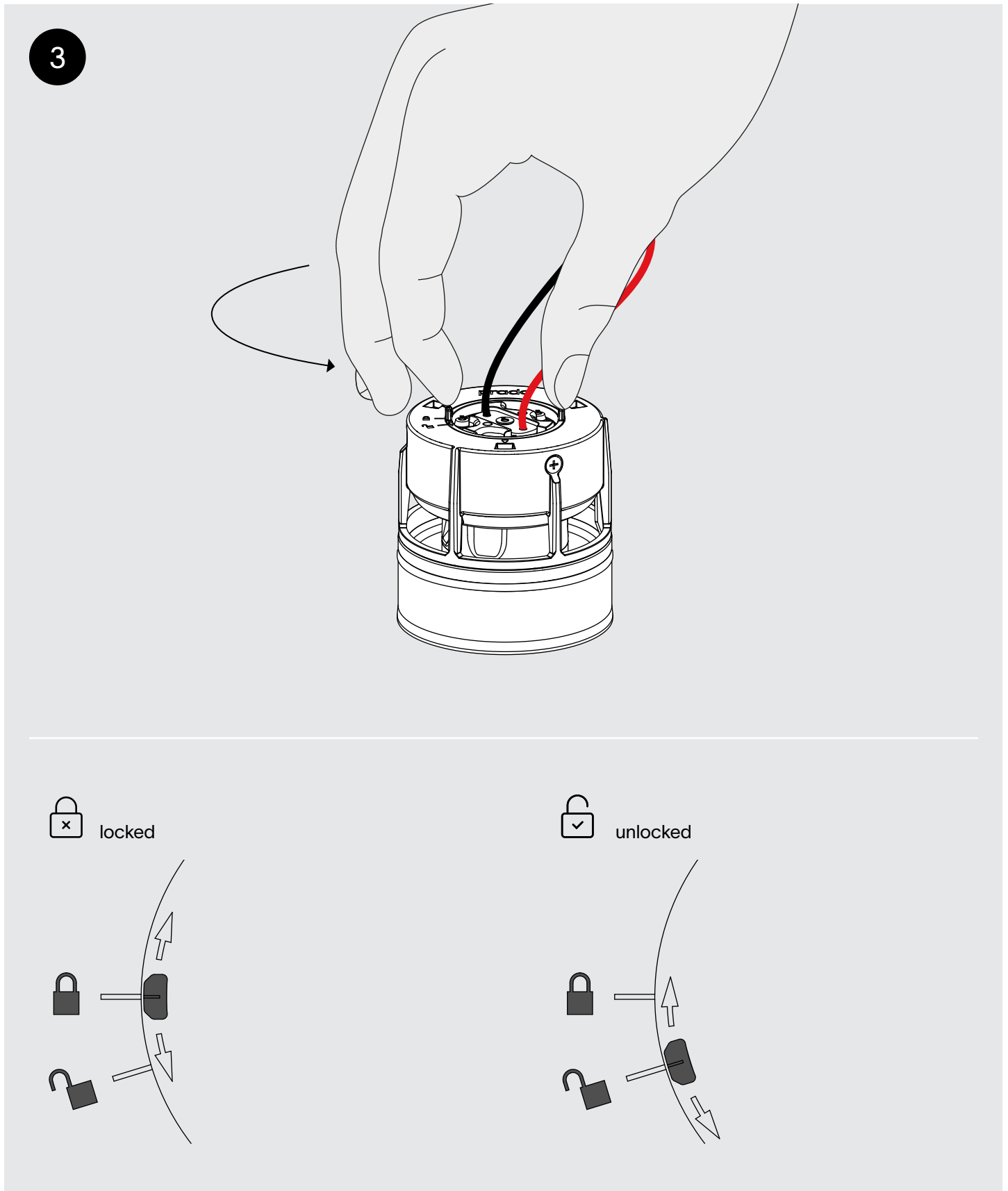


Connect the wires with waterproof connectors. For serial connection, respect polarity. Combine with a prado LED-driver.

2

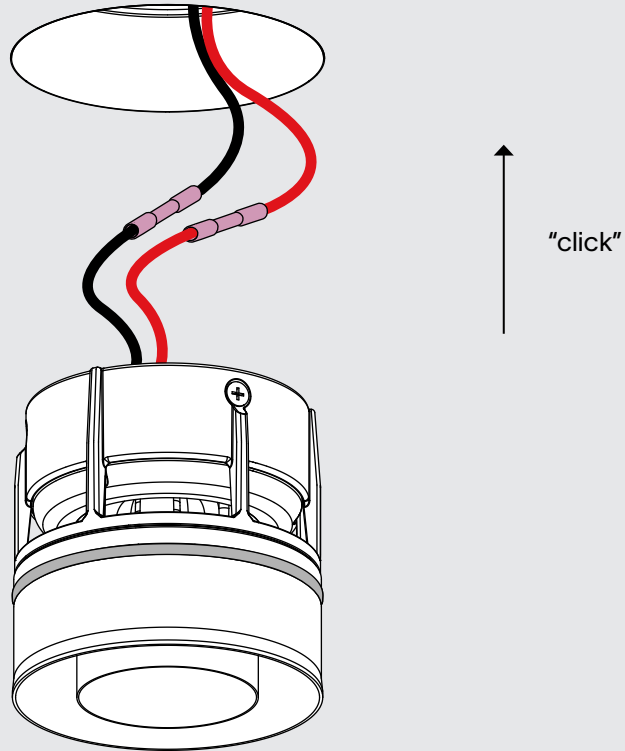


1. Insert the wires into the connector
2. Compress the middle part
3. Seal with a heater



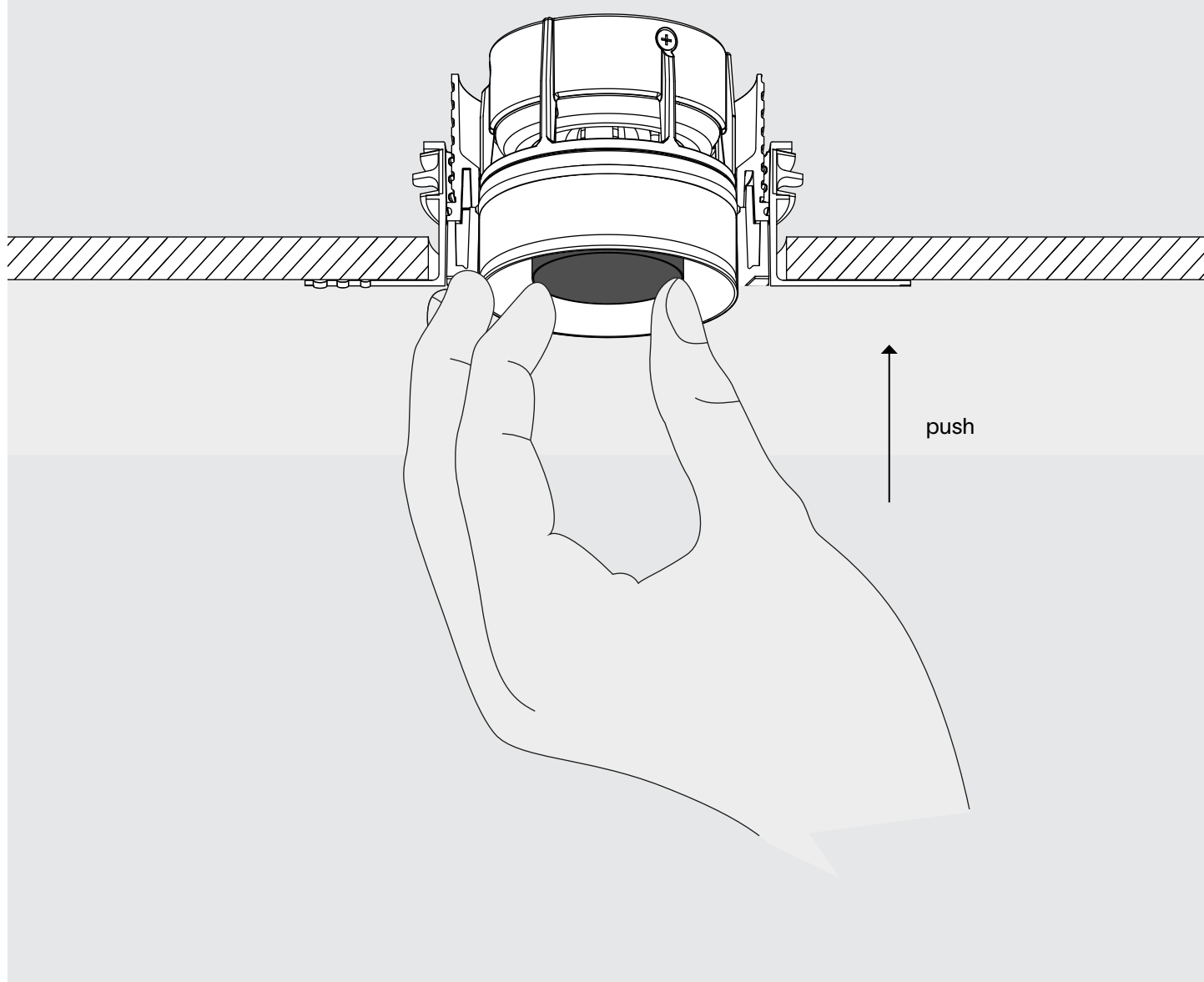
Unlock the lock on top of the fixture before adjusting the air flow by twisting the center piece.

4

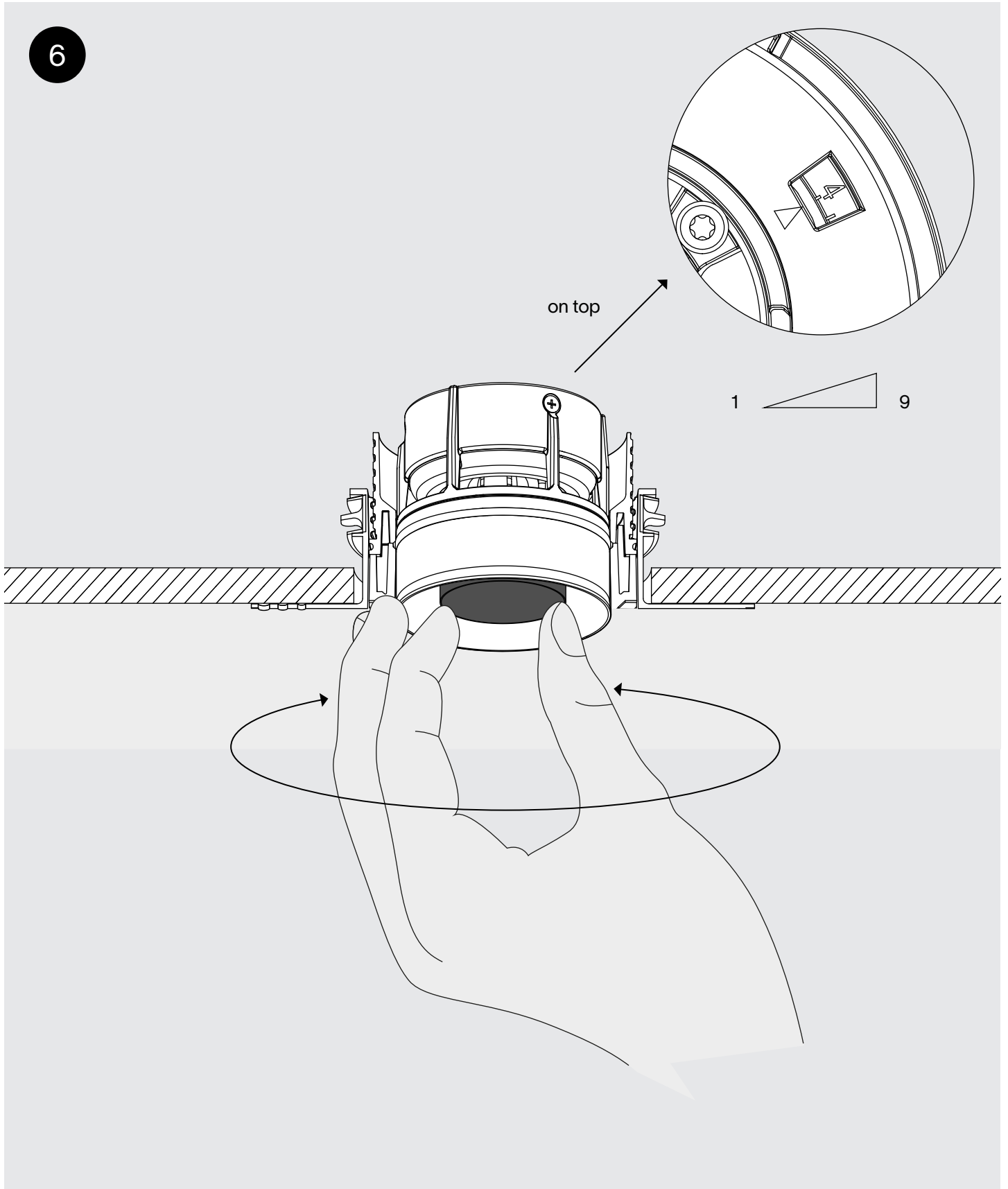


Gently insert the fixture into the plaster ring until it "clicks". Make sure that the ribs of the fixture match the cutouts of the plaster ring.

5

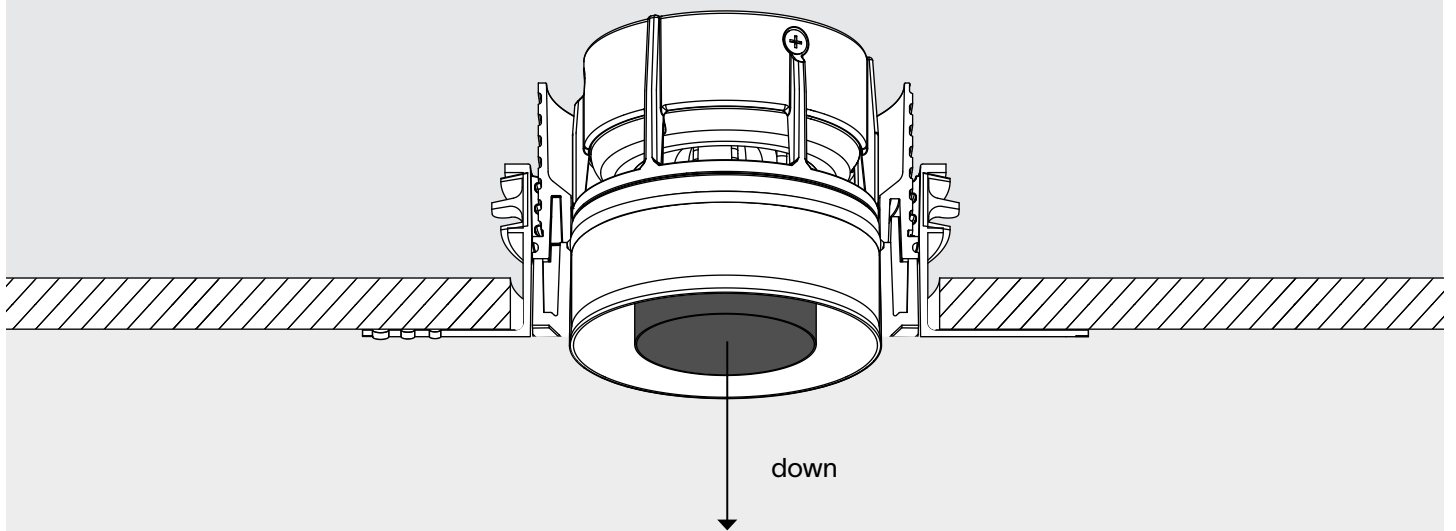


Push the luminaire up ...



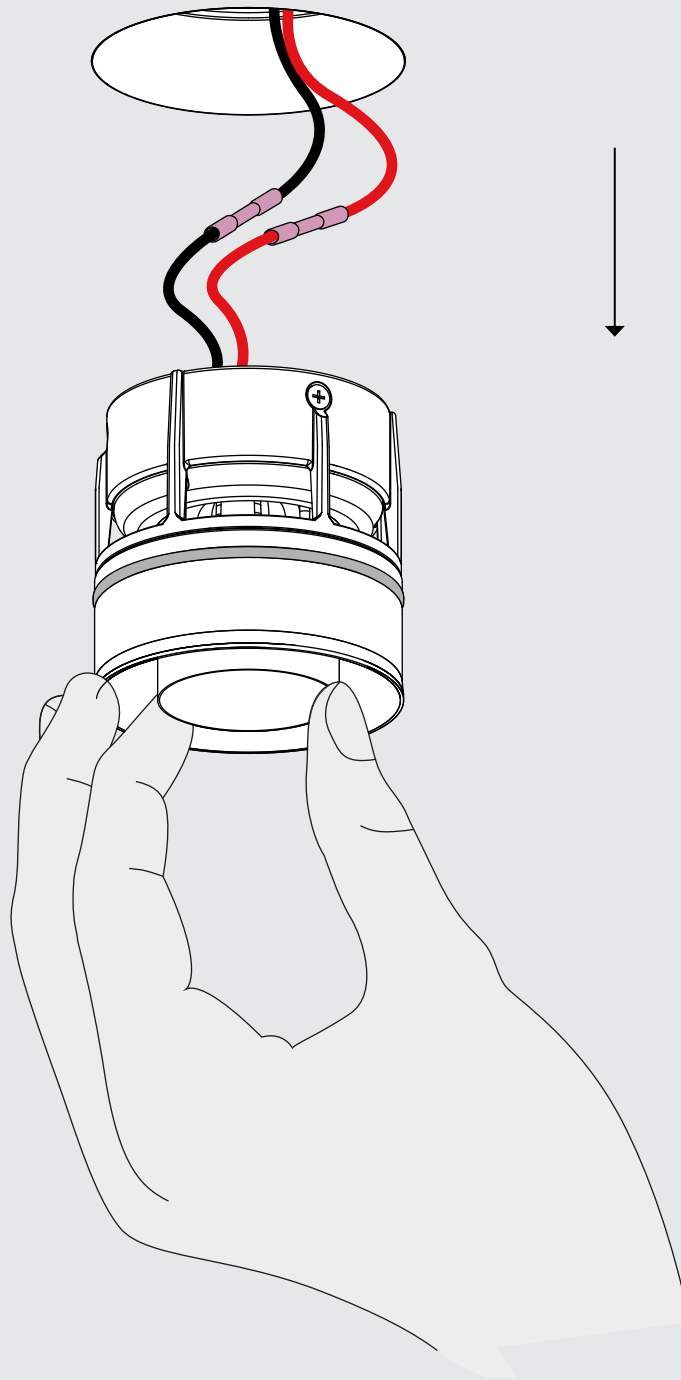
... and twist it to adjust the ventilation flow level.

7

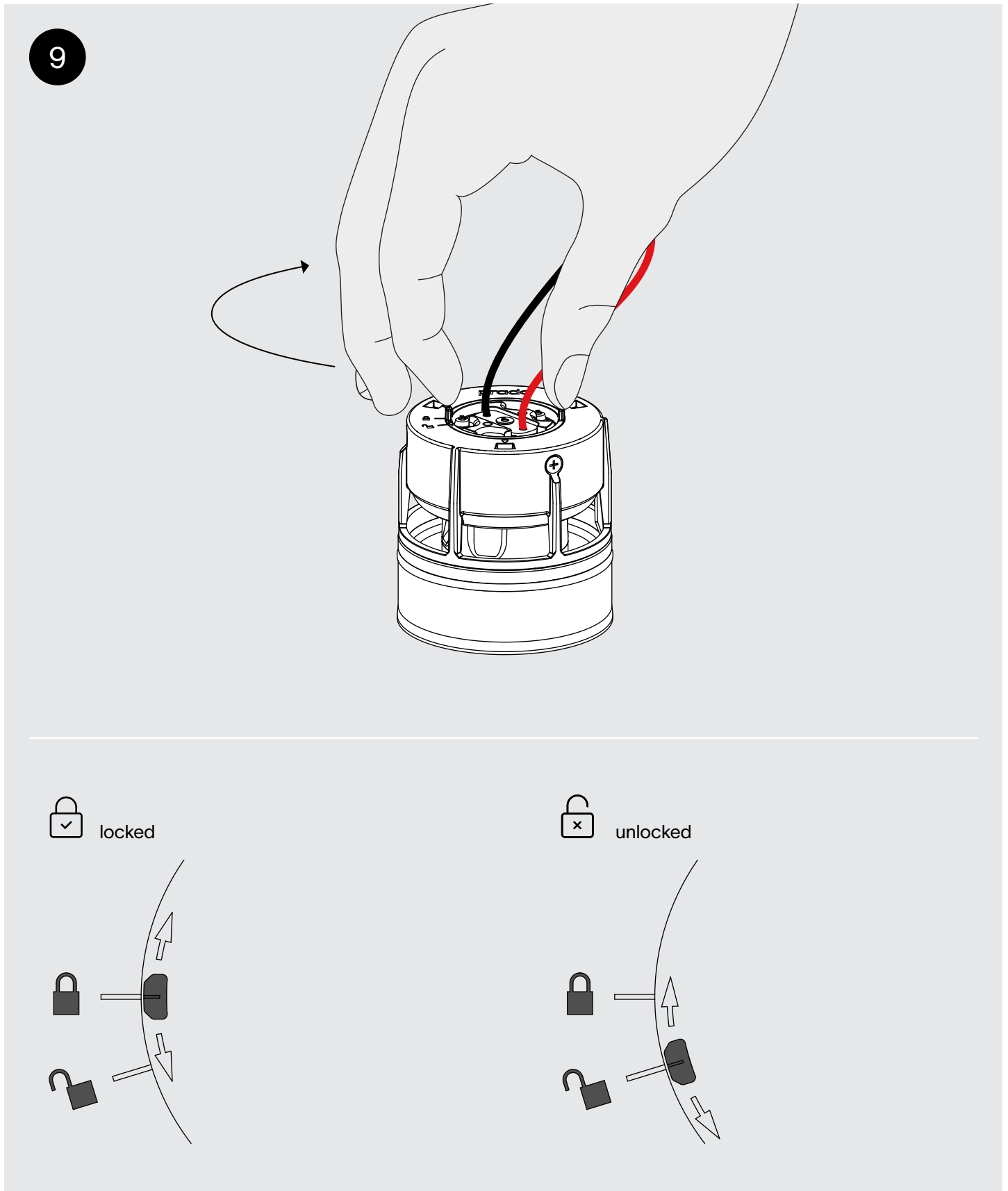


Once you have achieved the desired air flow, you can release it, the luminaire will lower and is now already locked in place.

8

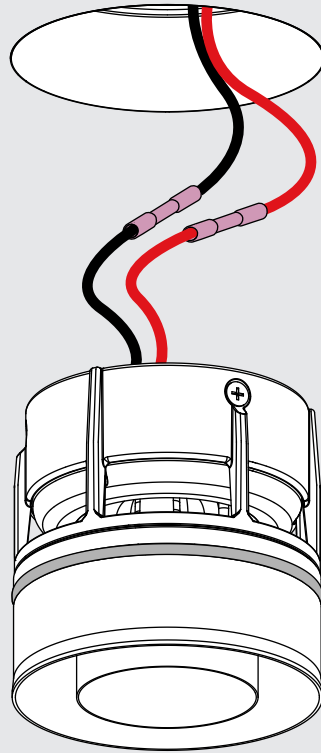


Optional: if you want to lock the fixture securely , take it back out...



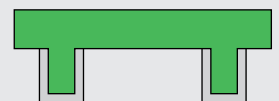
... and twist the lock on top of the fixture to make sure it remains locked.

10



↑
"click"

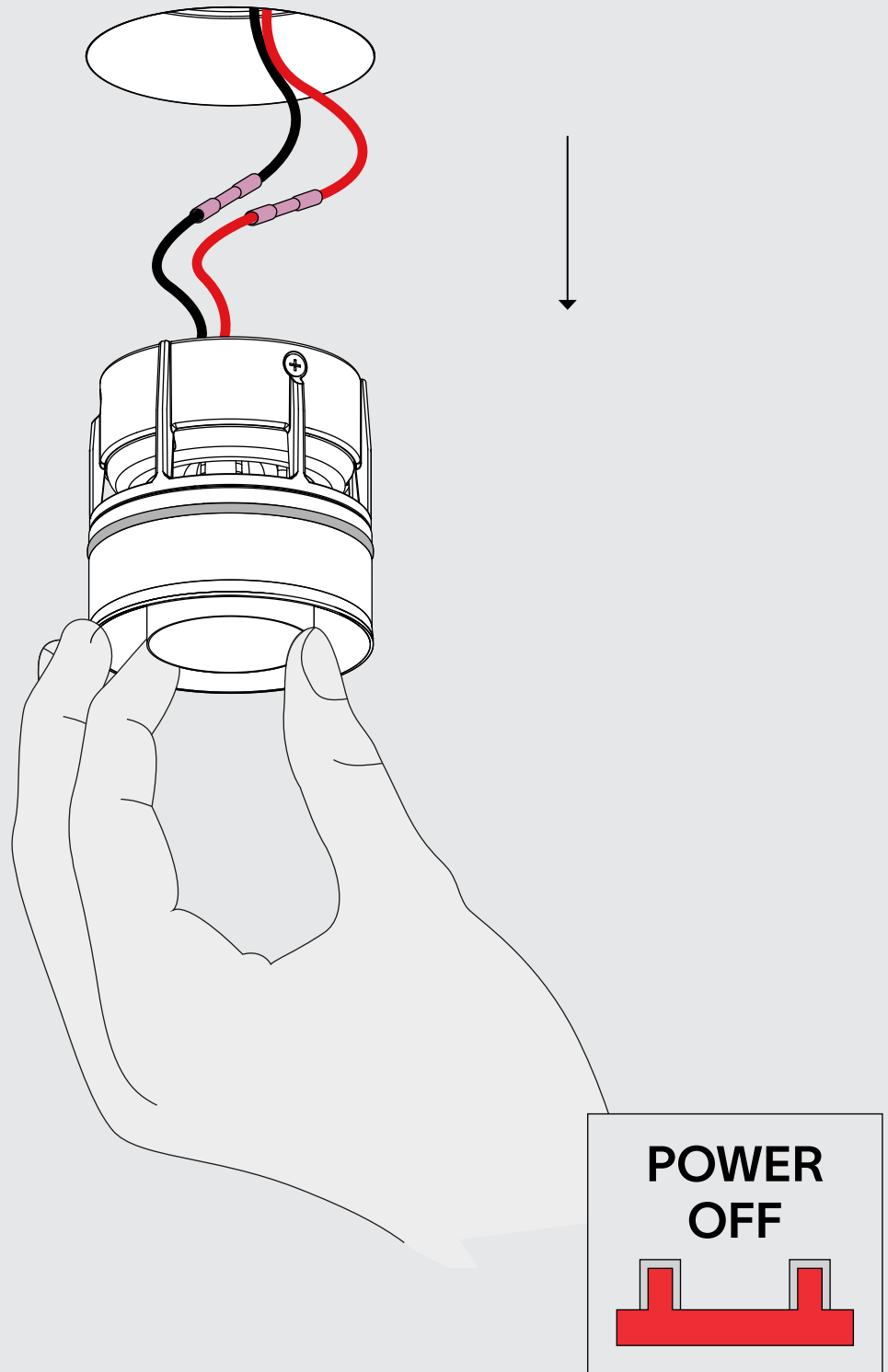
**POWER
ON**



Gently insert the fixture into the kit until it "clicks".

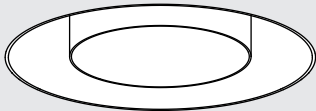
1

for removal



In case of maintenance or adjusting the ventilation flow level, the luminaire can be removed by pulling the fixture.

2



thank you for choosing prado

			IP65	CE		Replace glass lense when broken. Luminaire shall only be used together with glass lens.
--	--	--	------	----	--	--

prado.com

Installation must be done by skilled professionals only and instructions must be followed at all times. Warranty will not apply in case of wrongful use or if unskilled personnel attempts to repair a product.