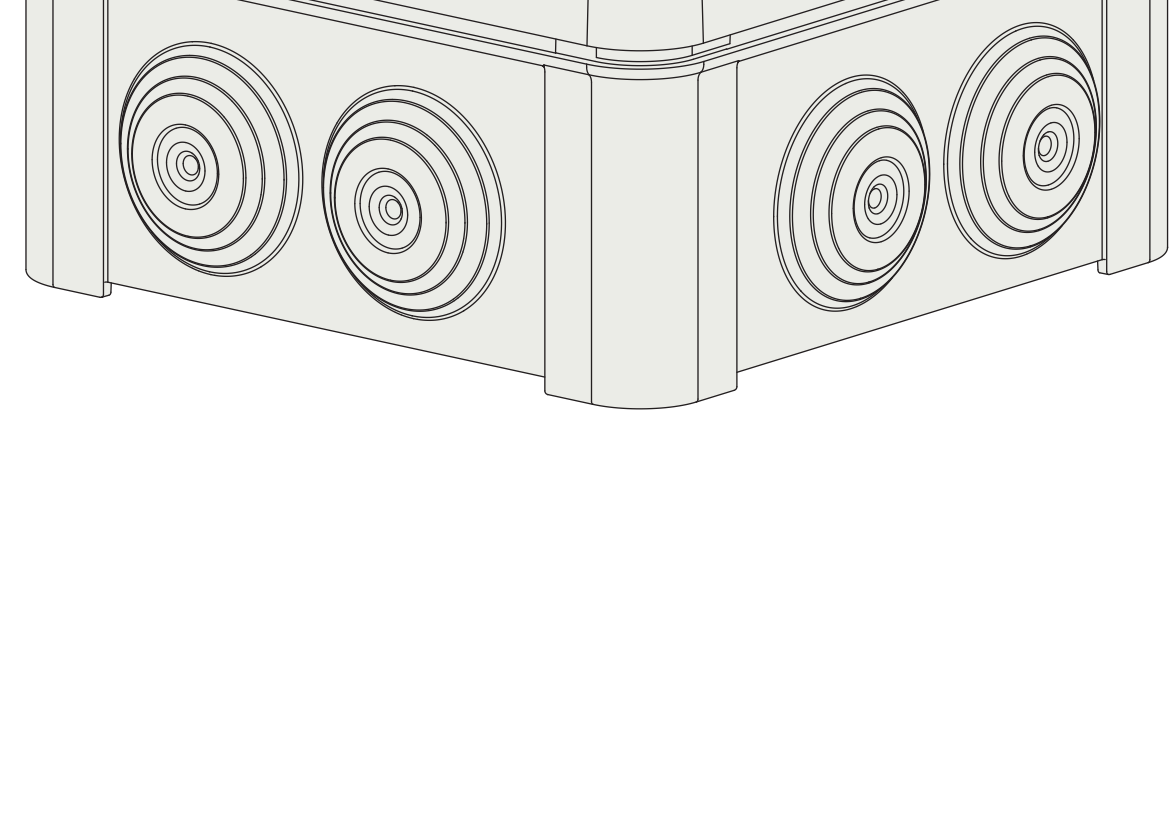


## acrobat outdoor | tree strap

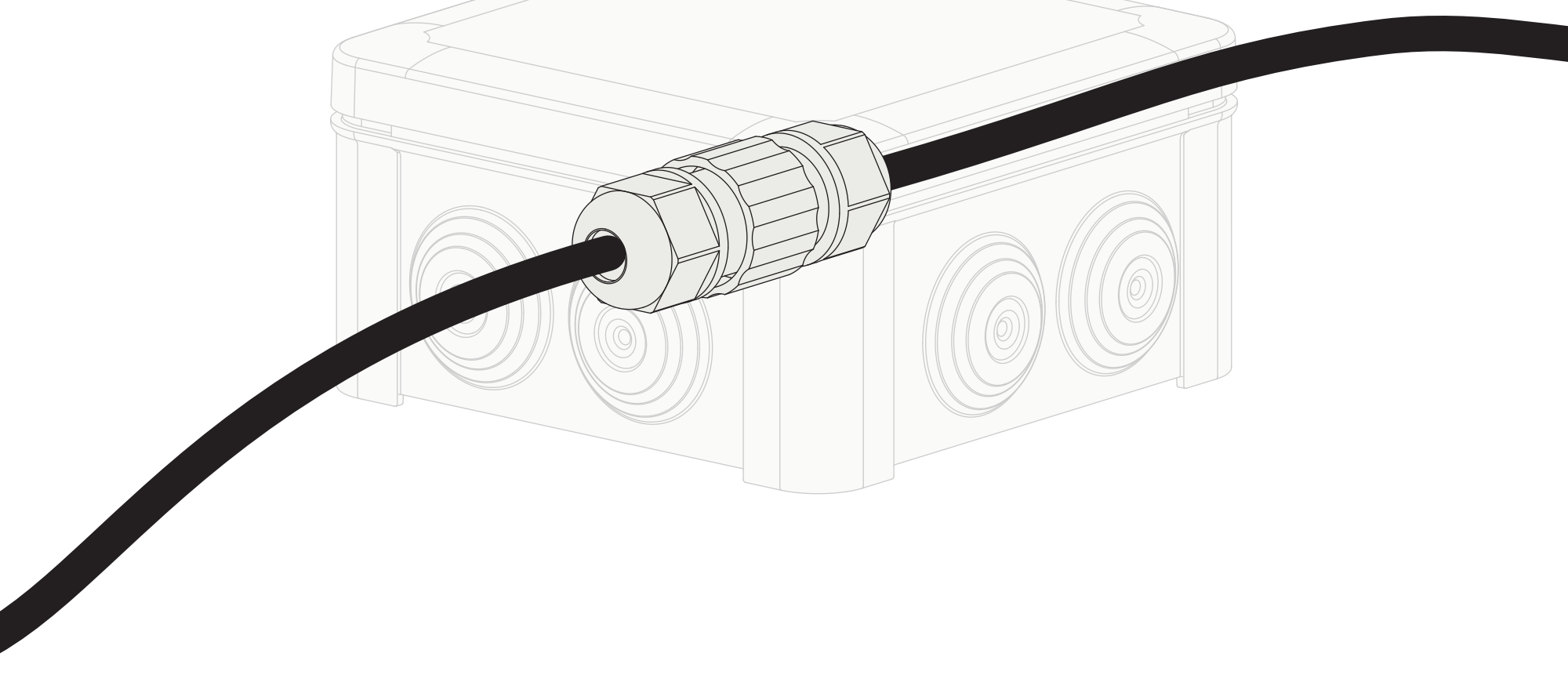
## installation instruction

1

POWER  
OFF

Use an outdoor connection box for the wire connections. Make sure the power is turned off.

2

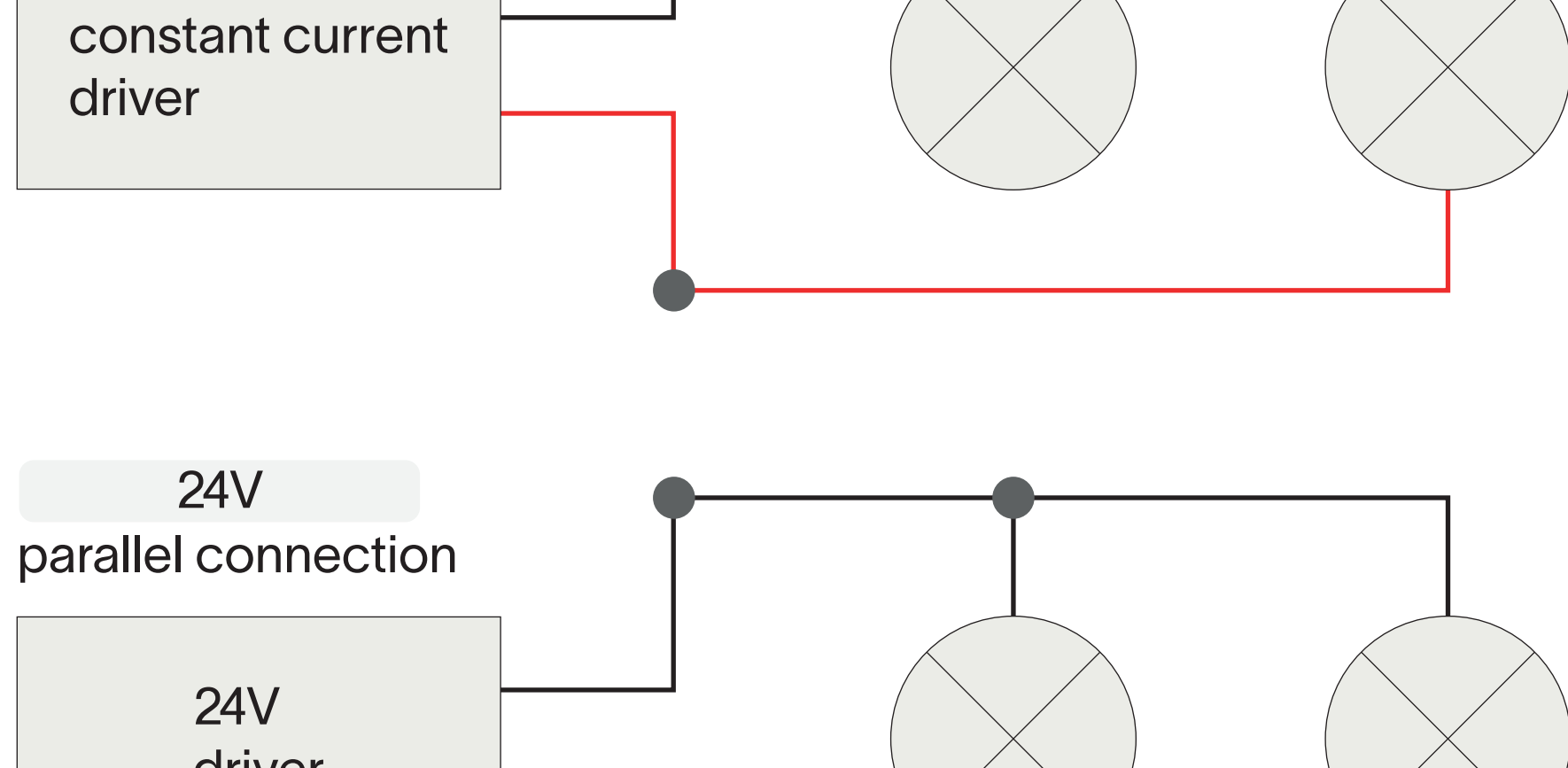


Make the connection inside the box using a waterproof connector (min IP67).

Combine with prado LED-driver , respect polarity:

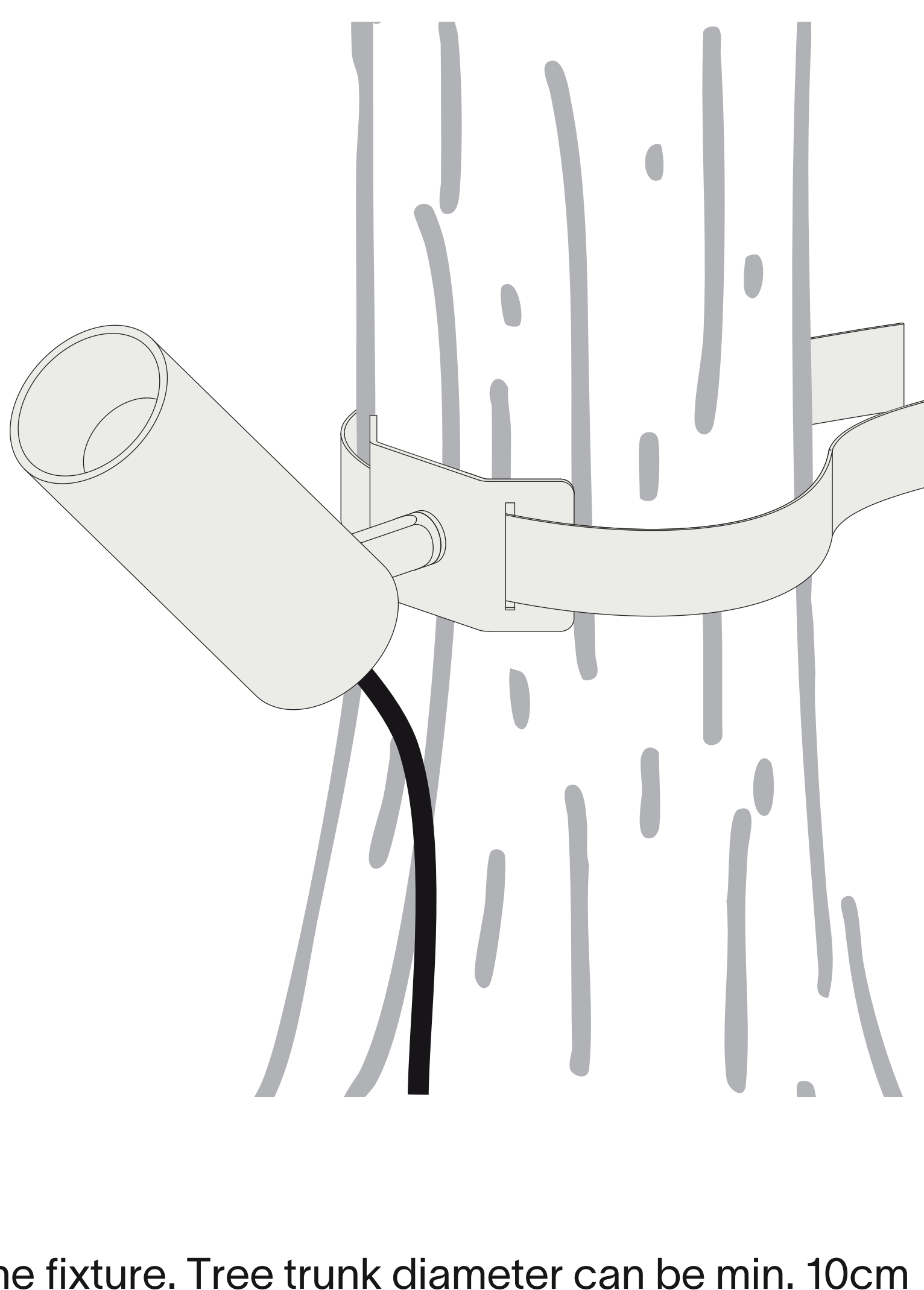
- for constant current: serial connection
- for 24V driver: parallel connection

The installer is responsible for using the correct wire section and must consider the maximum cable length to ensure safe and efficient system operation. Incorrect wire choice can lead to overheating, voltage drop, and equipment damage.



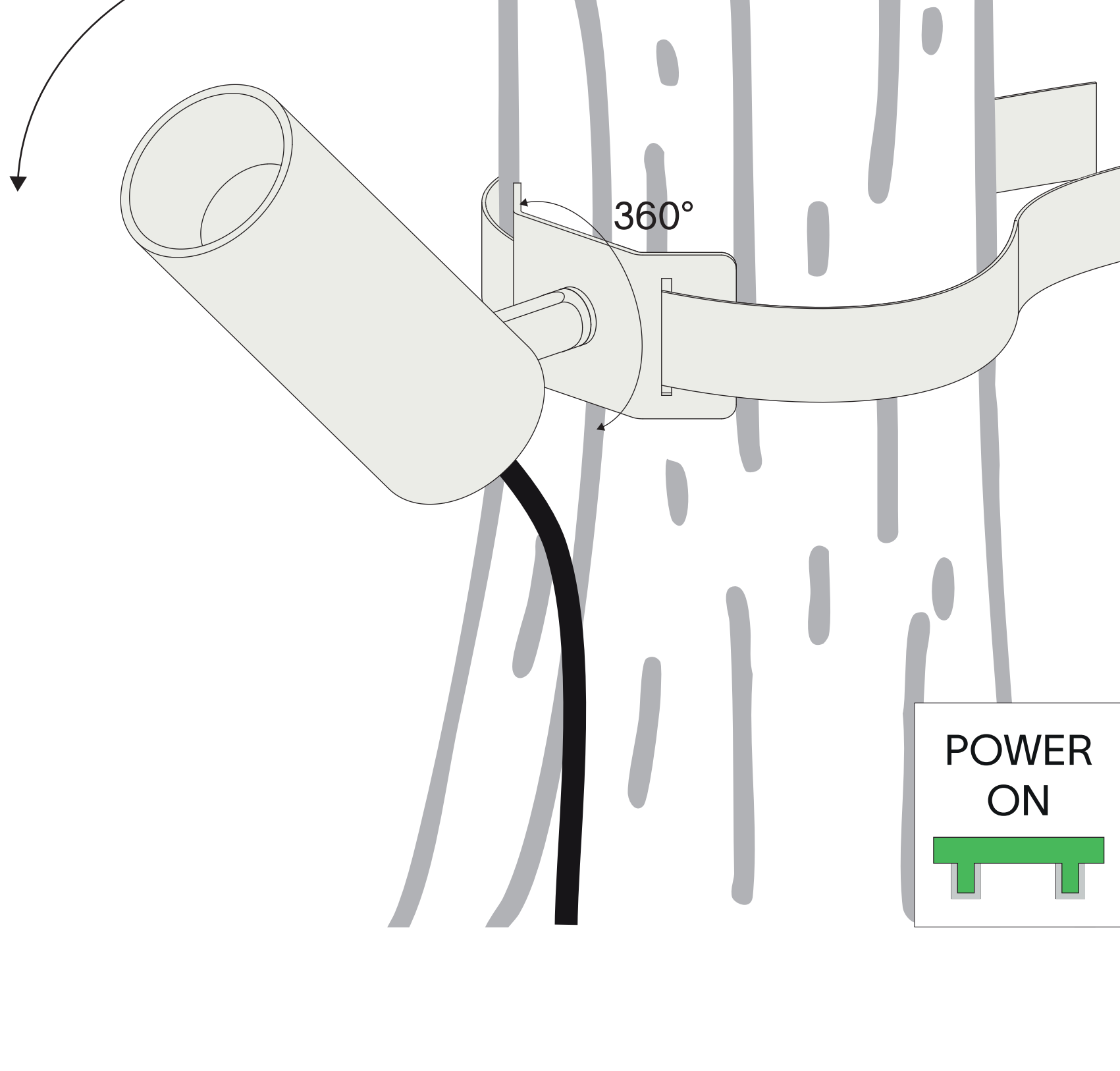
**Important Note for the Installer:**  
Ensure the external electrical connection for this fixture is waterproof. It is the installer's responsibility to use materials and techniques that meet IP standards and prevent water ingress. Failure to waterproof the connection may lead to fixture damage, electric shock, or short circuits. Any risks or damages from improper waterproofing are the installer's responsibility. We strongly recommend using appropriate water-proofing materials for the installation environment.

3



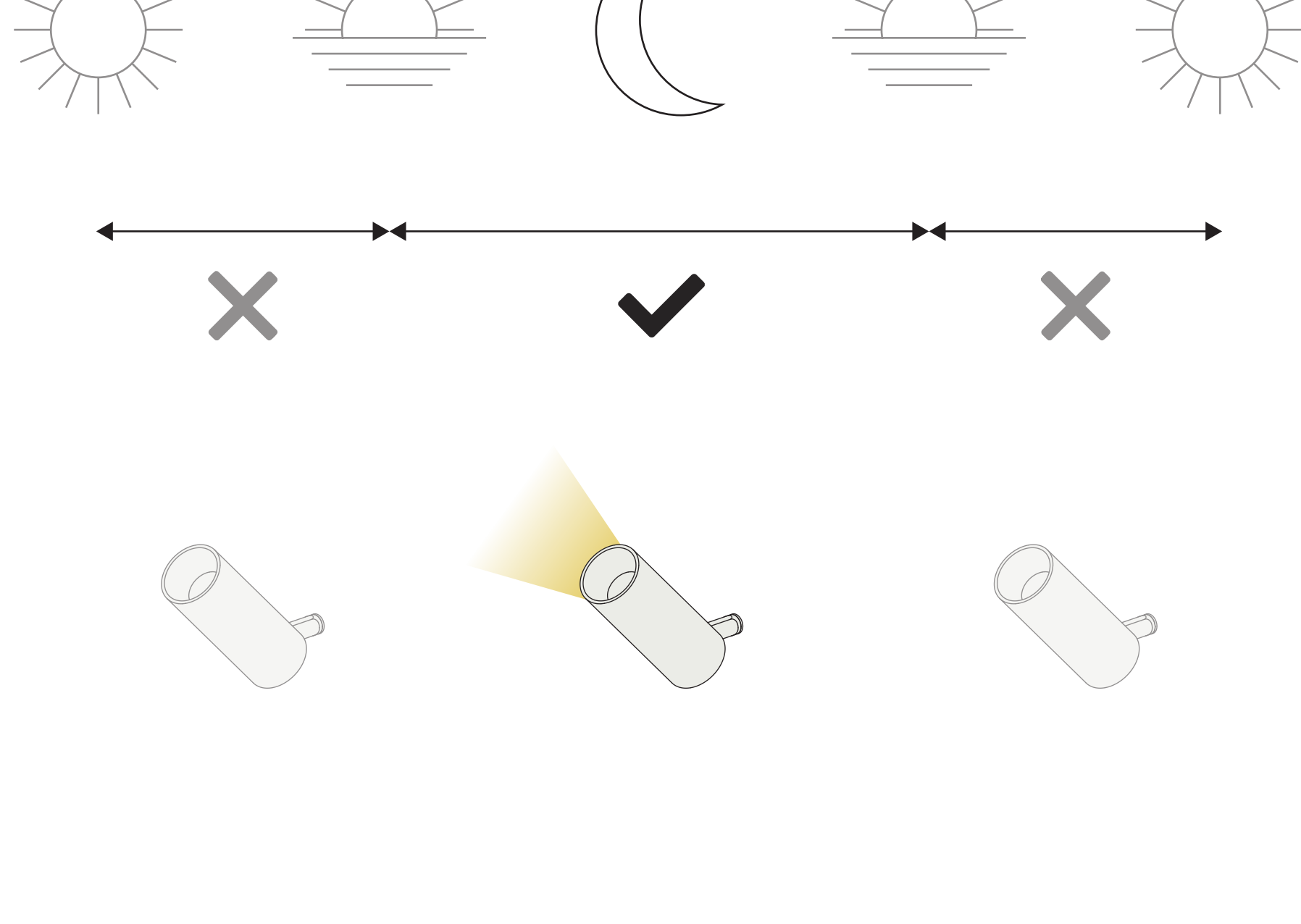
Install the fixture. Tree trunk diameter can be min. 10cm and max. 30cm.

4



Twist the fixture as desired and turn the power back on.

5



To prevent overheating, do not light the fixture in the sunlight.

Thank you for choosing prado

