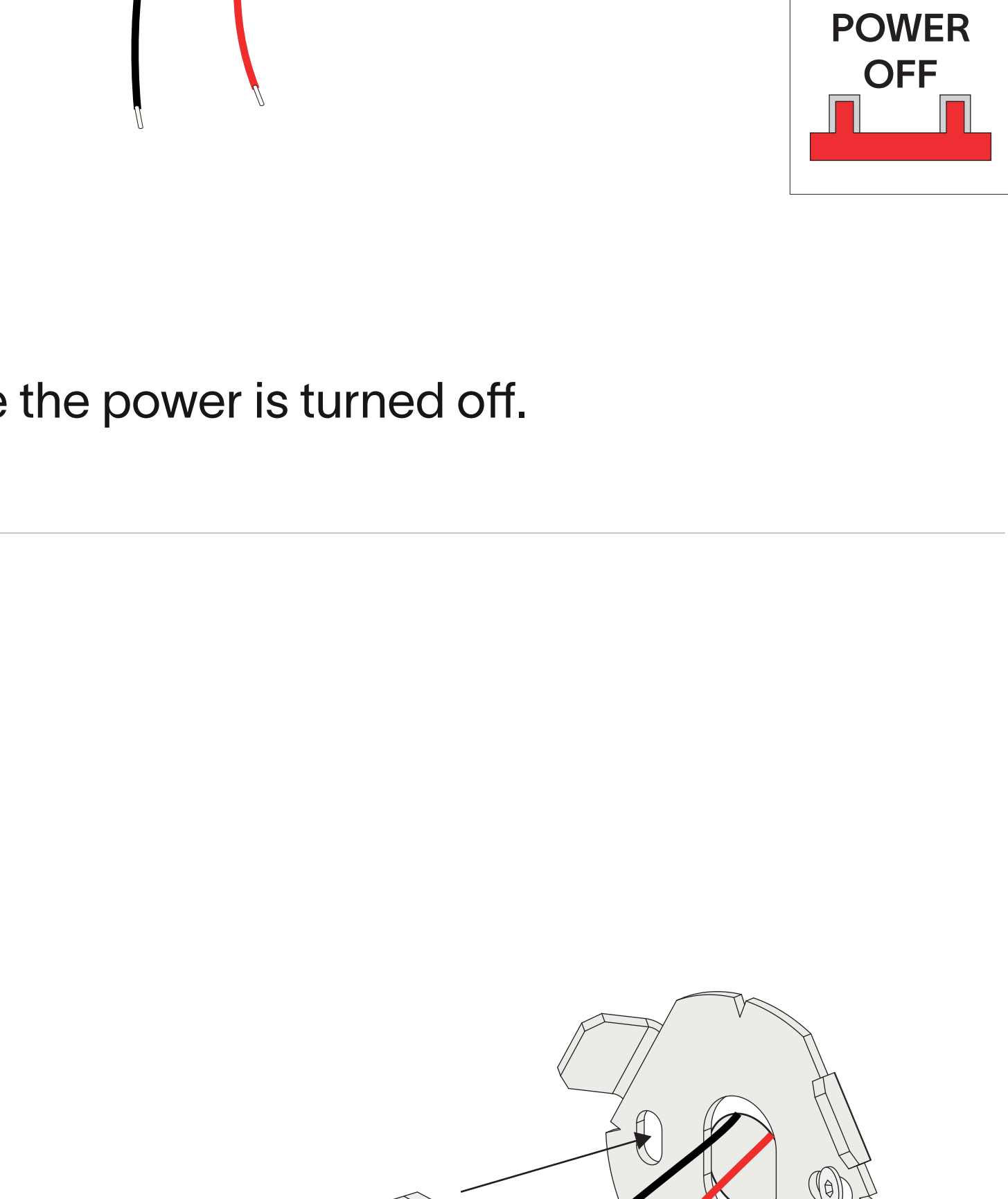


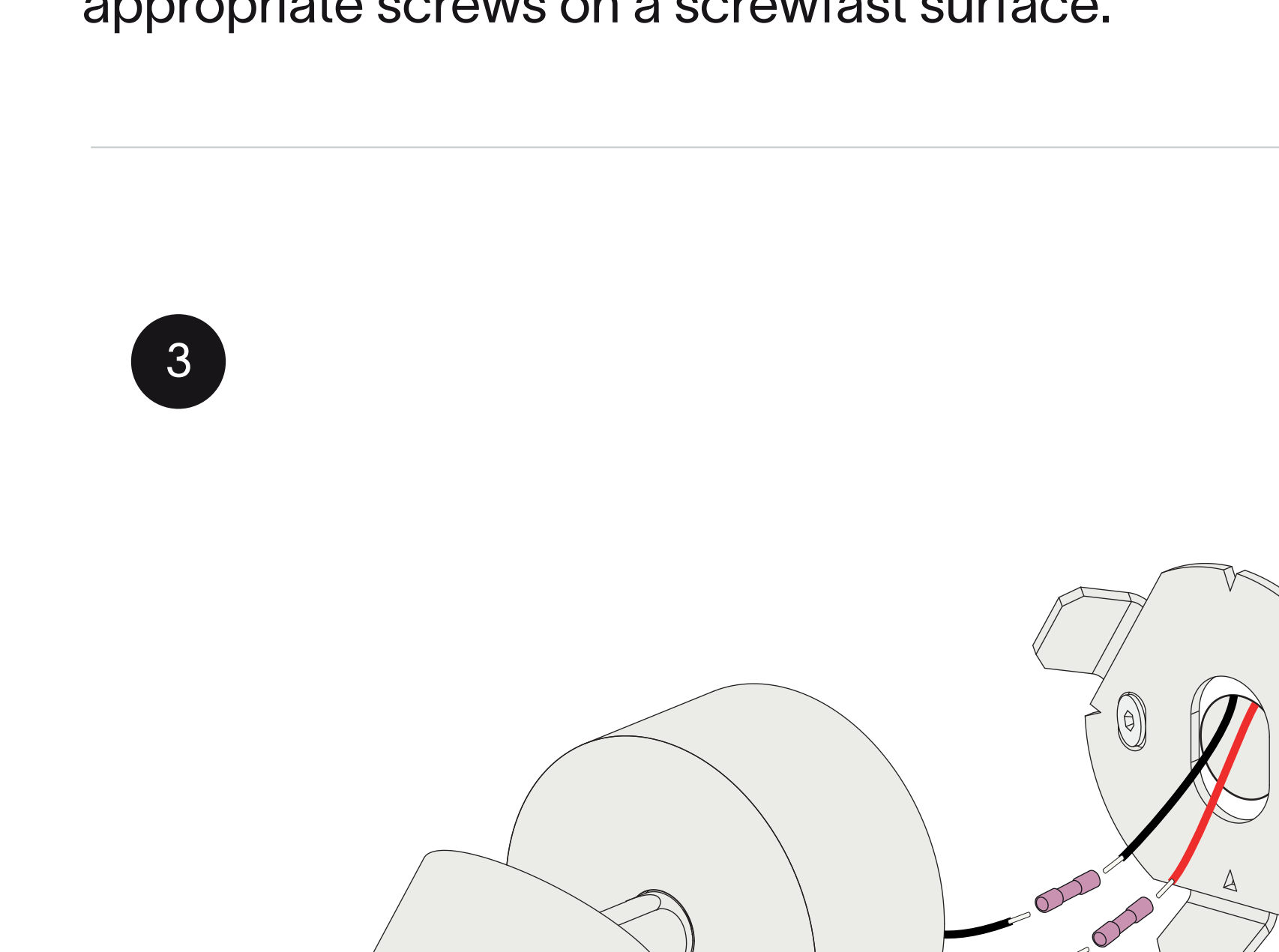
# outdoor surface round installation instruction

1



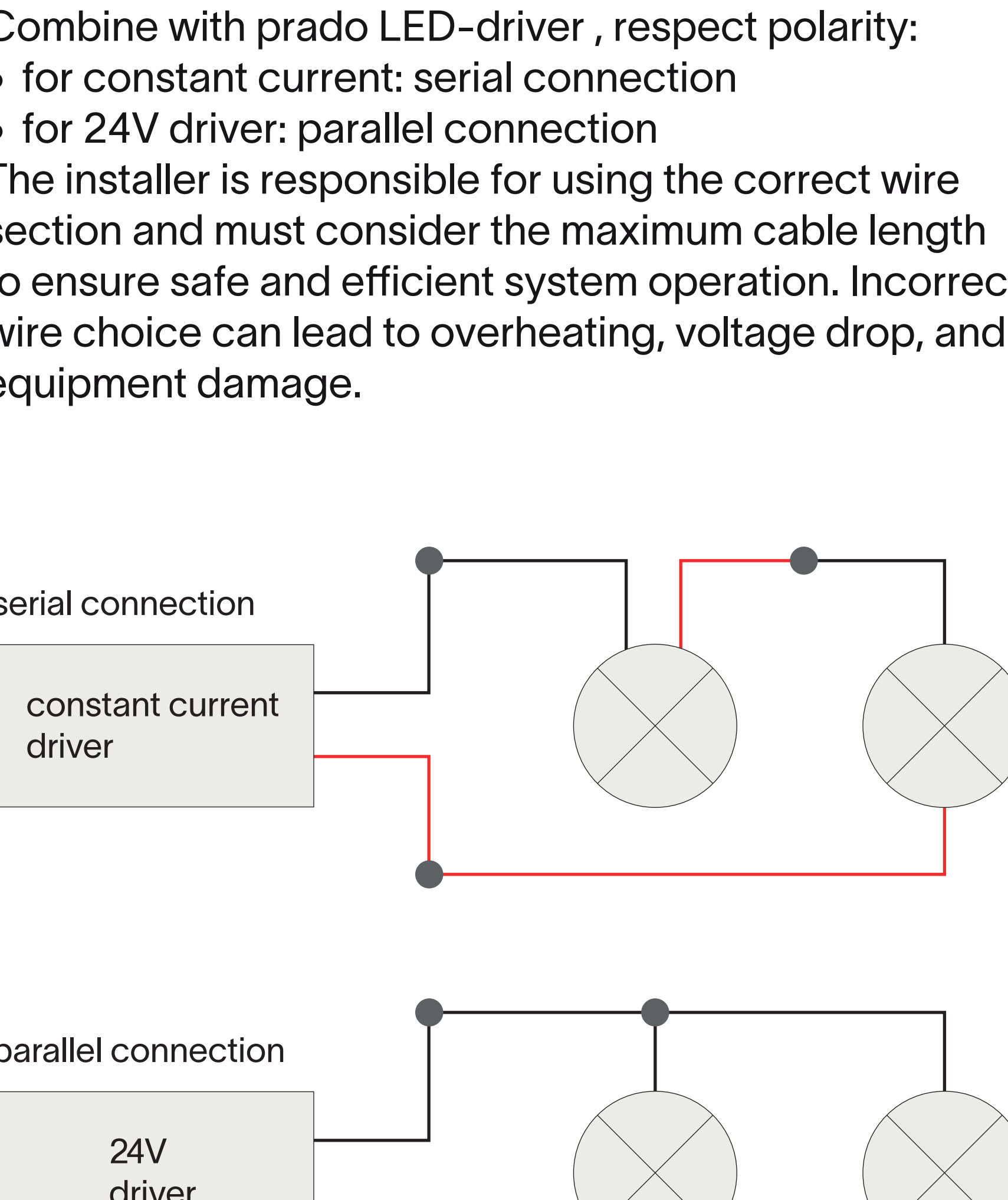
Make sure the power is turned off.

2



Fixate the mounting plate on the wall with the appropriate screws on a screwfast surface.

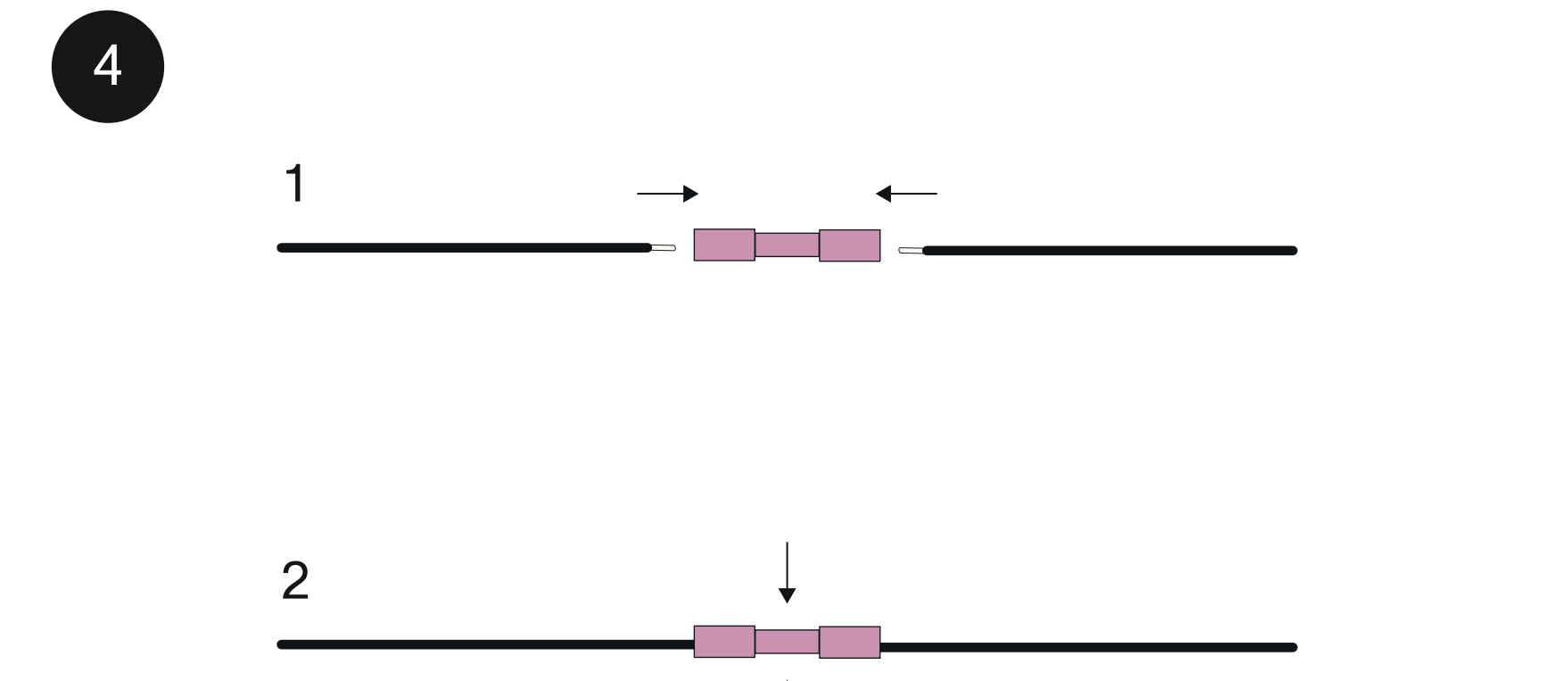
3



Connect the wires with waterproof connectors, Combine with prado LED-driver , respect polarity:

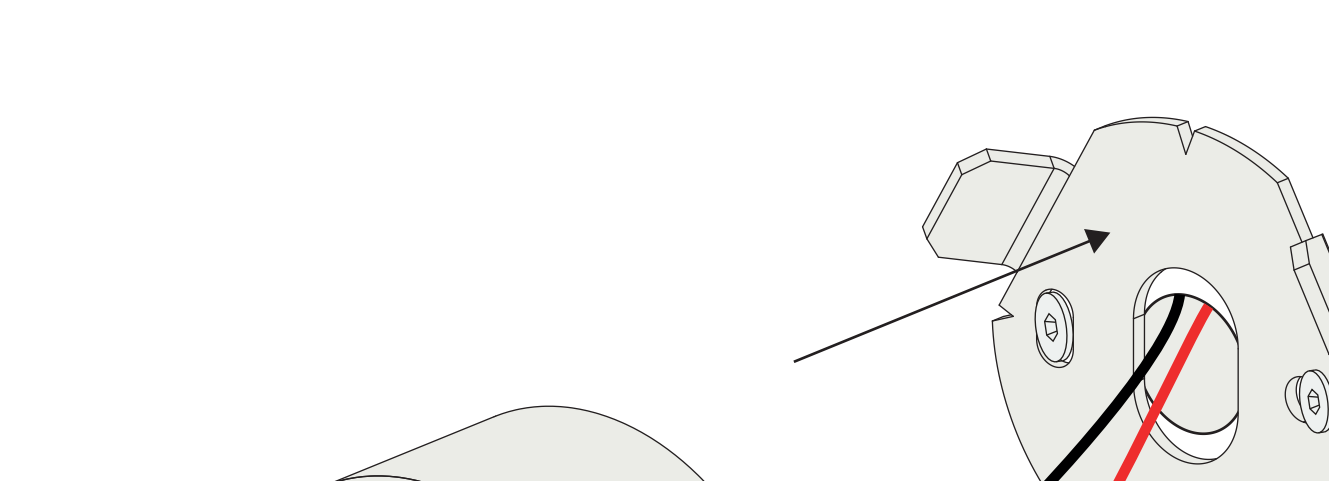
- for constant current: serial connection
- for 24V driver: parallel connection

The installer is responsible for using the correct wire section and must consider the maximum cable length to ensure safe and efficient system operation. Incorrect wire choice can lead to overheating, voltage drop, and equipment damage.



**Important Note for the Installer:**  
Ensure the external electrical connection for this fixture is waterproof. It is the installer's responsibility to use materials and techniques that meet IP standards and prevent water ingress. Failure to waterproof the connection may lead to fixture damage, electric shock, or short circuits. Any risks or damages from improper waterproofing are the installer's responsibility. We strongly recommend using appropriate waterproofing materials for the installation environment.

4

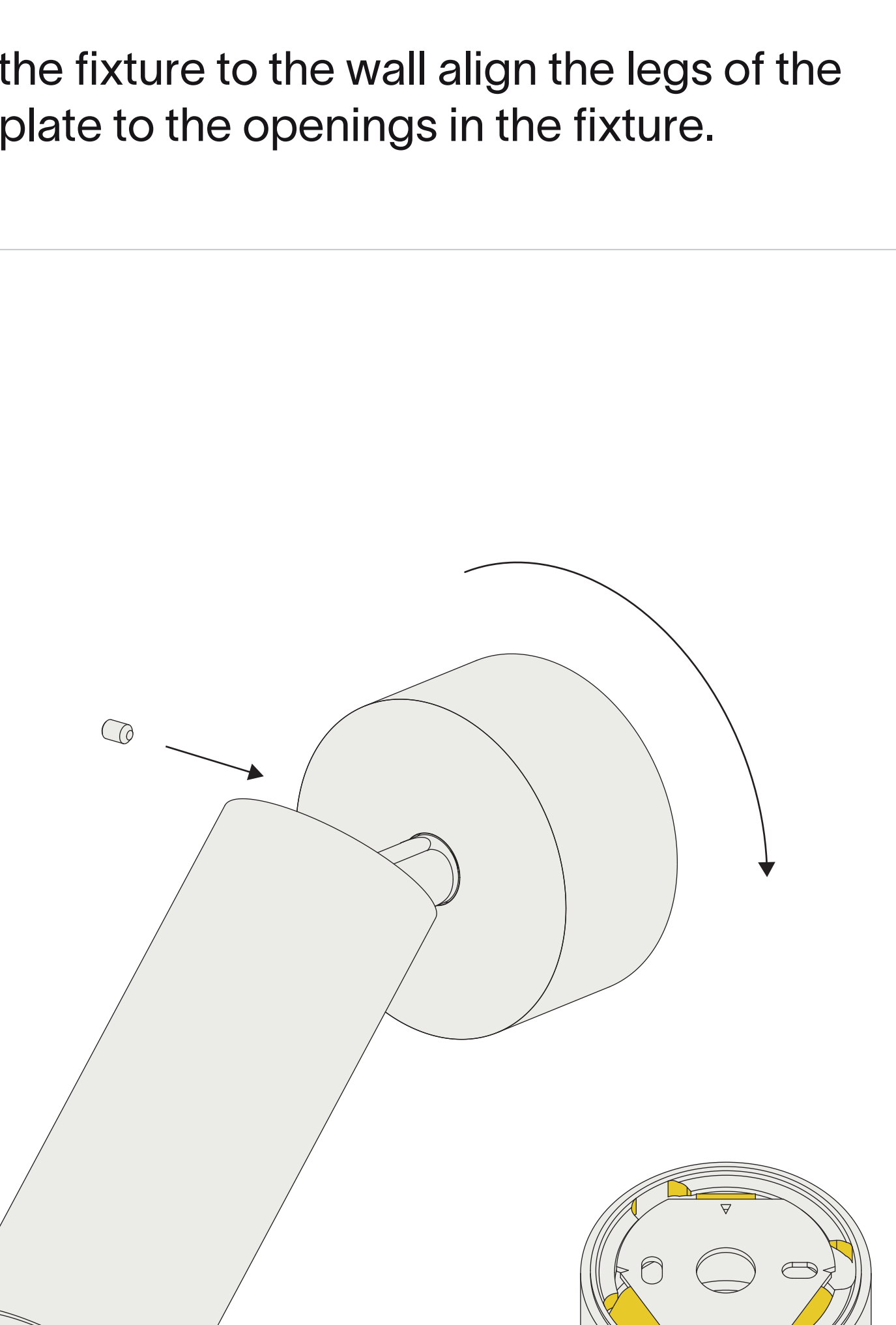


1. insert the wires into the connector

2. compress the middle part

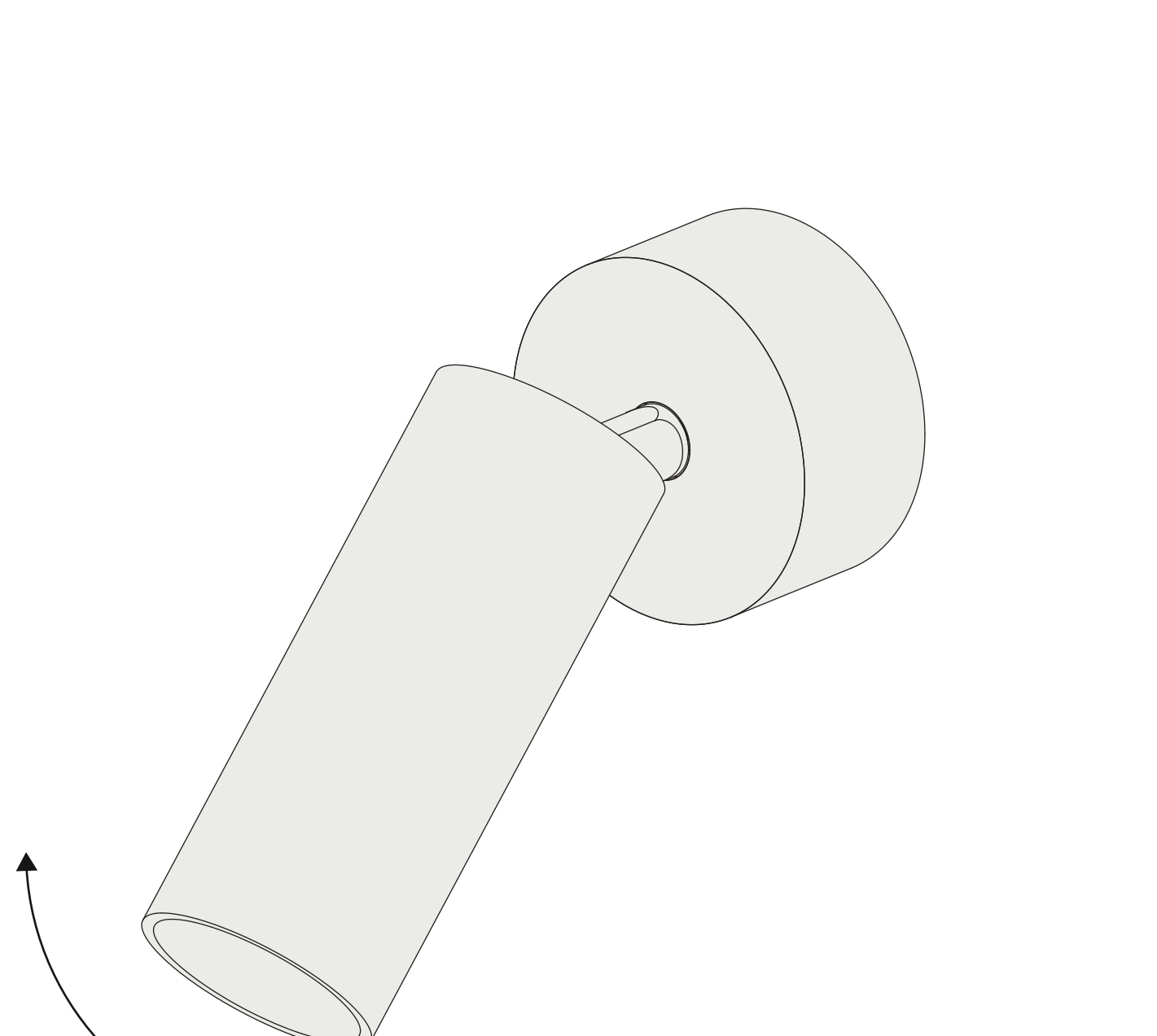
3. seal with a heater

5



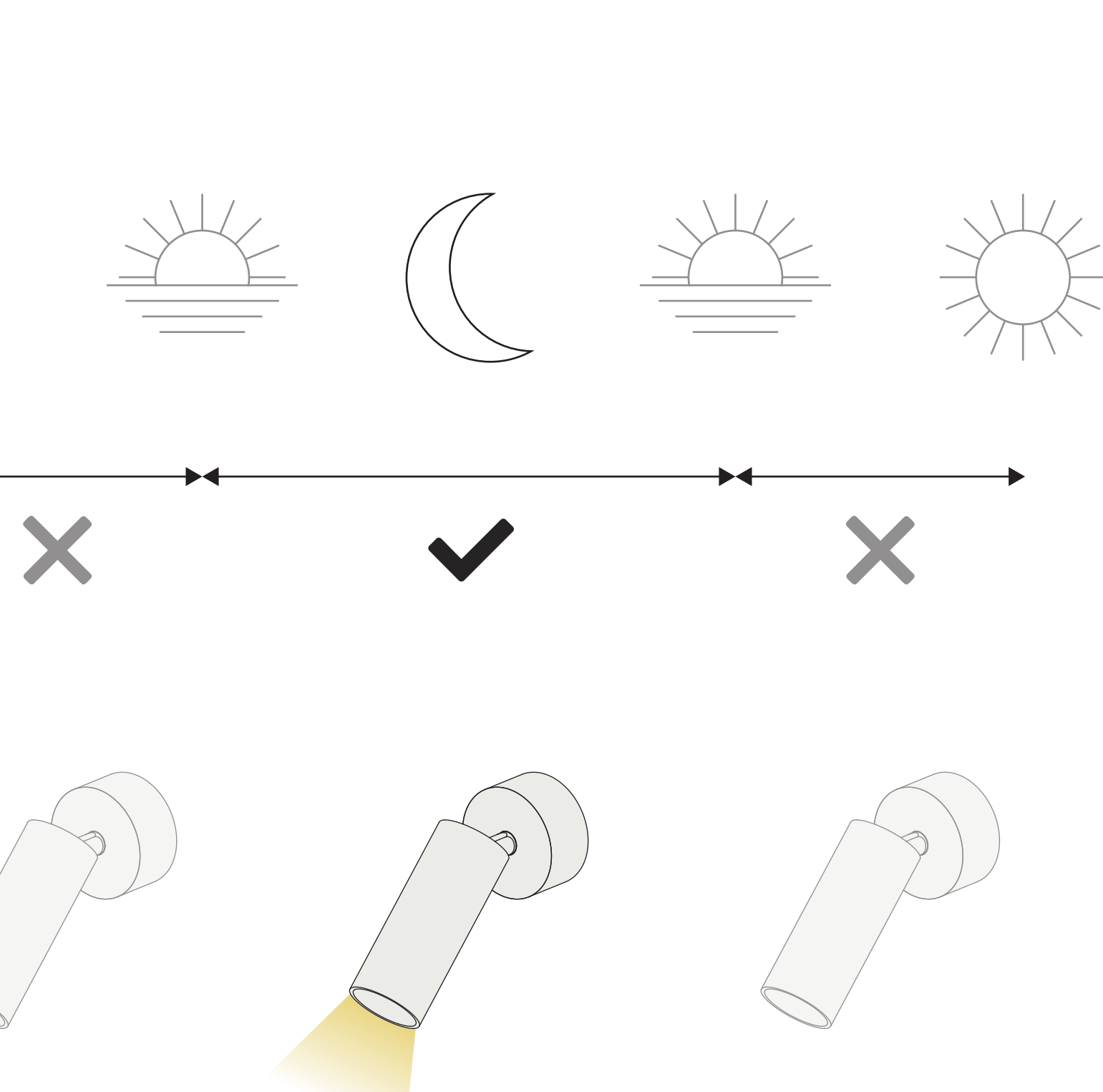
To attach the fixture to the wall align the legs of the mounting plate to the openings in the fixture.

6



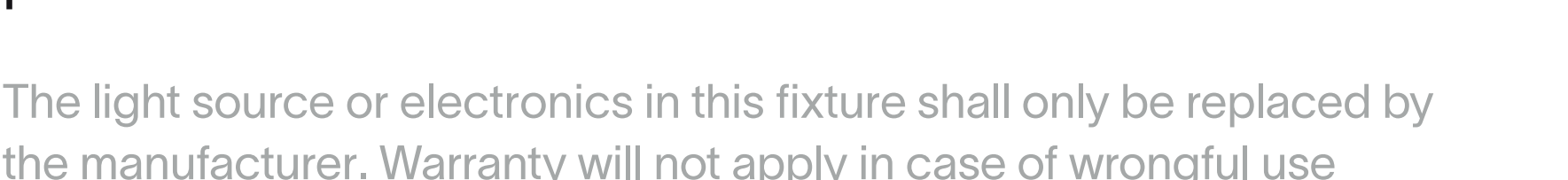
Twist the fixture clockwise and fasten the screw to lock the fixture.

7



Twist the fixture as desired and turn the power back on.

8



To prevent overheating, do not light the fixture in the sunlight.

Thank you for choosing prado

