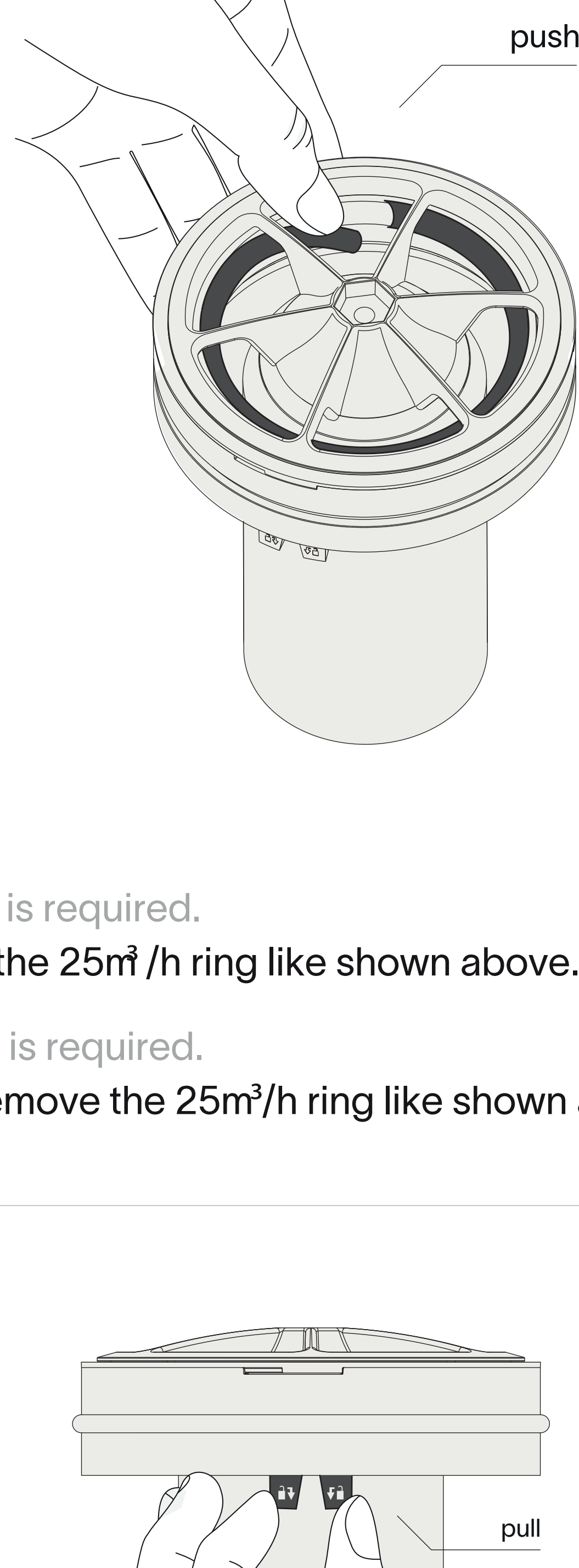


light+motion+ventilation | long 2.0

installation instruction

1



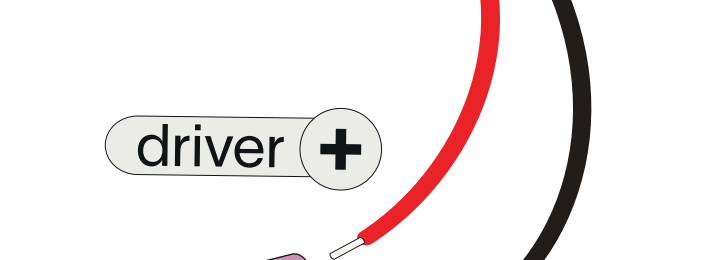
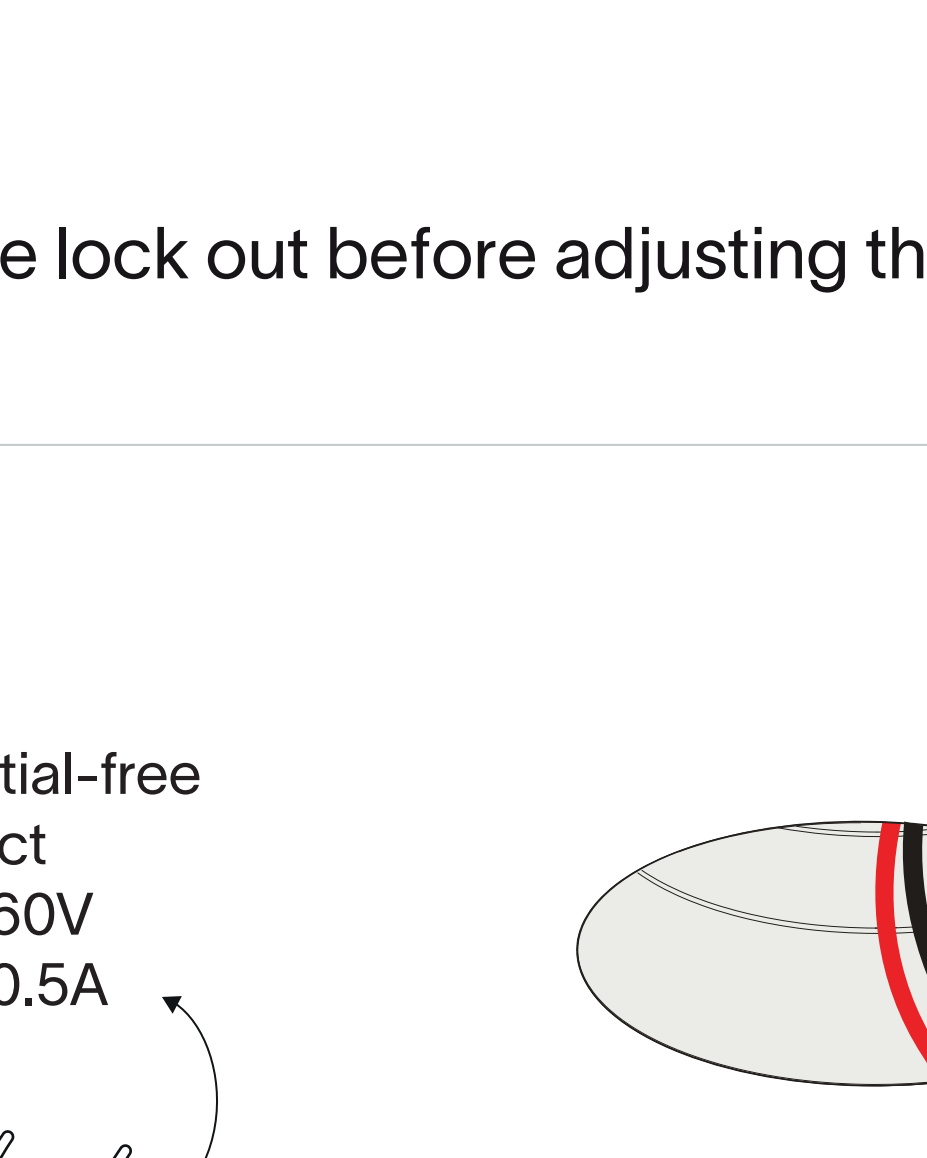
If 50m³/h is required.

Remove the 25m³/h ring like shown above.

If 25m³/h is required.

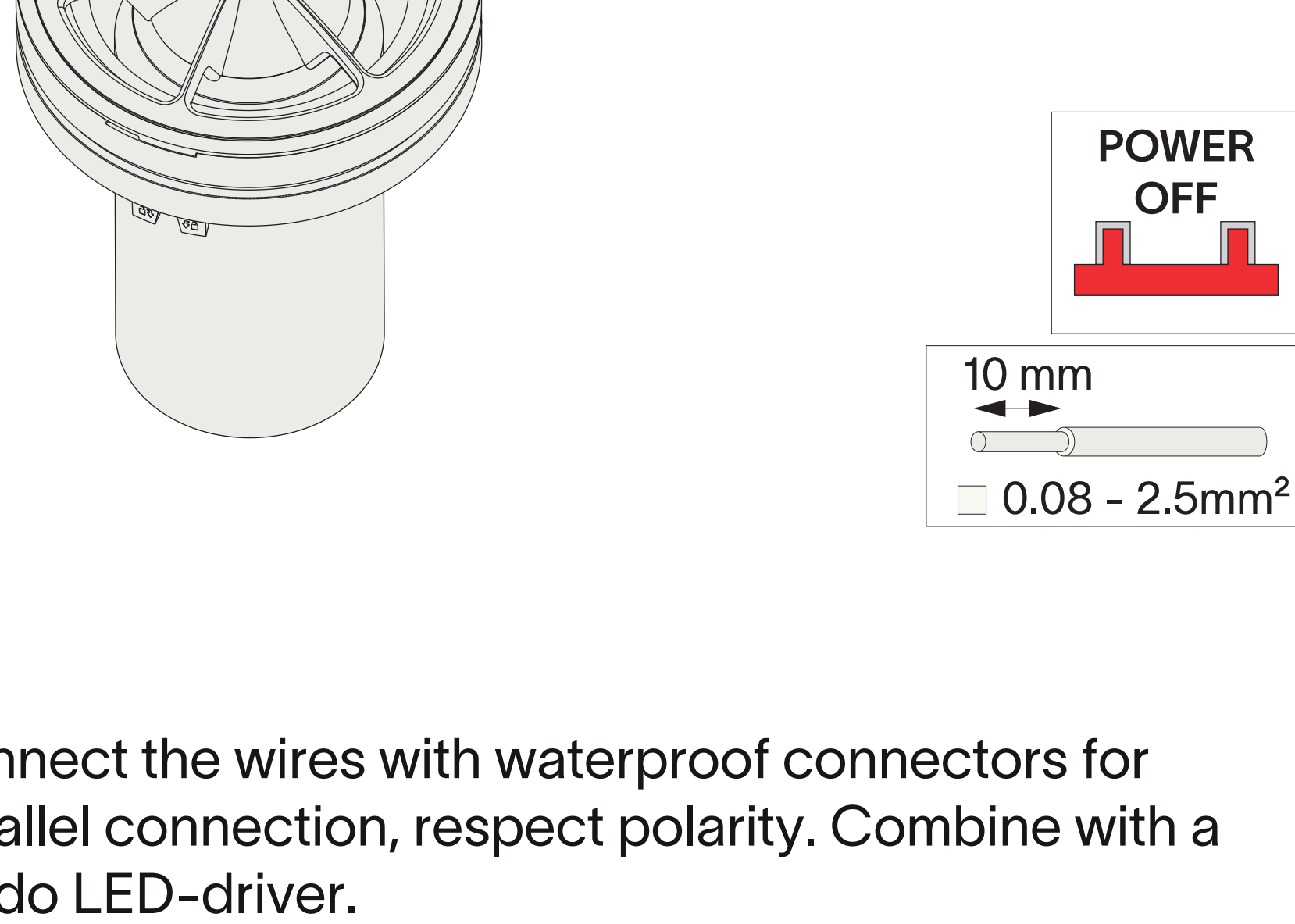
Do not remove the 25m³/h ring like shown above.

2



Gently pull the lock out before adjusting the air flow.

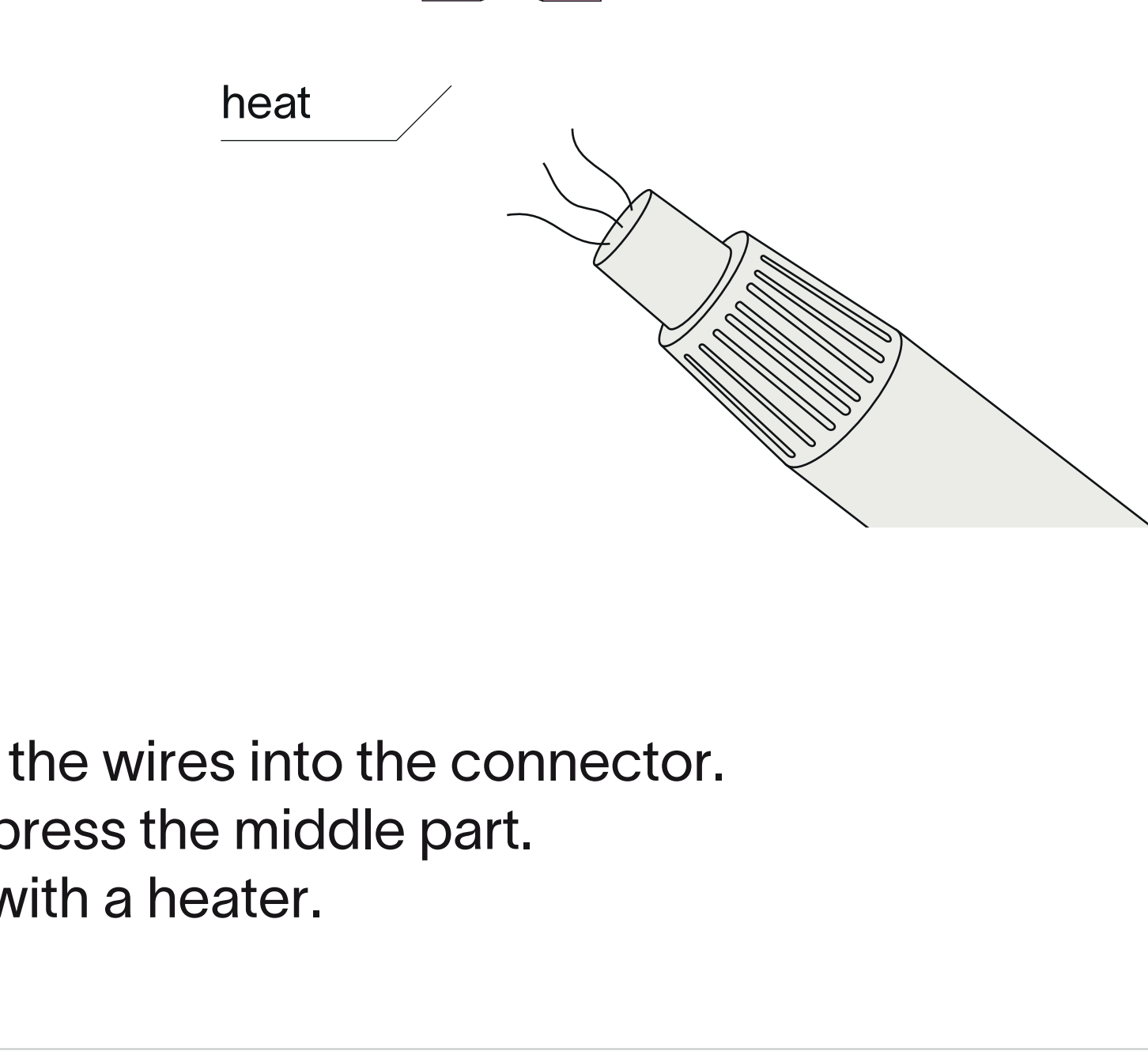
3



Connect the wires with waterproof connectors for parallel connection, respect polarity. Combine with a prado LED-driver.

The potential-free contact closes when the luminaire turns on.

4



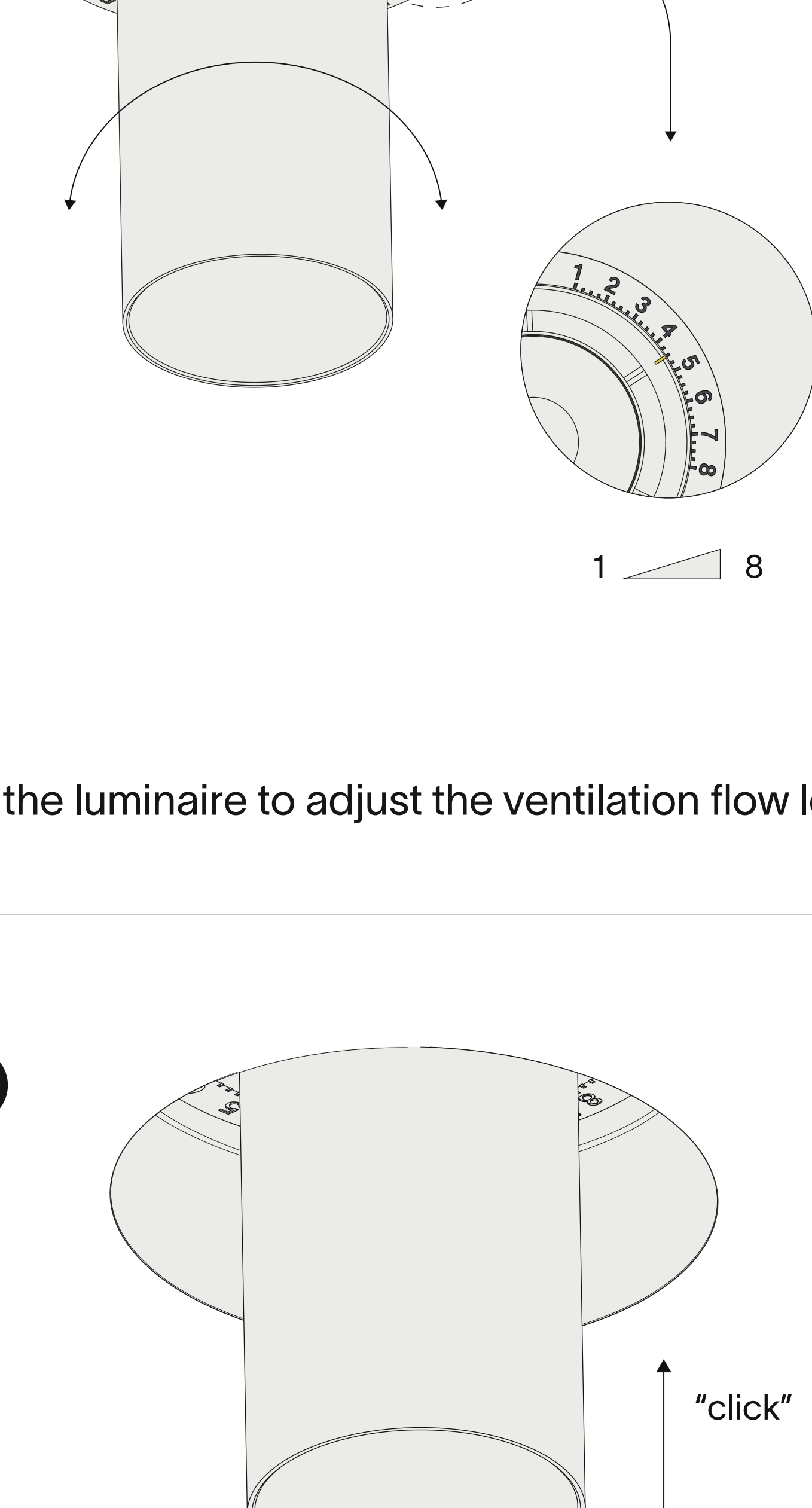
1. Insert the wires into the connector.
2. Compress the middle part.
3. Seal with a heater.

5



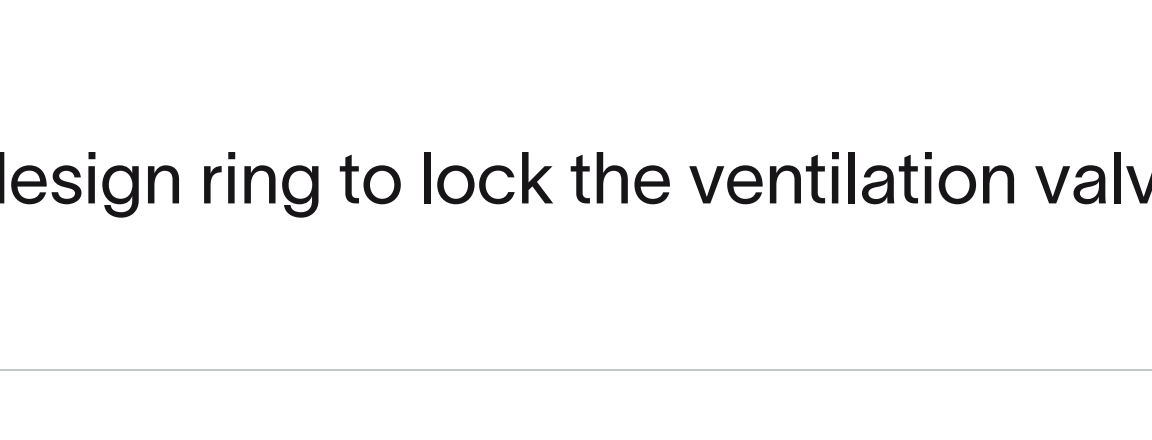
Gently insert the fixture into the kit until it "clicks".

6



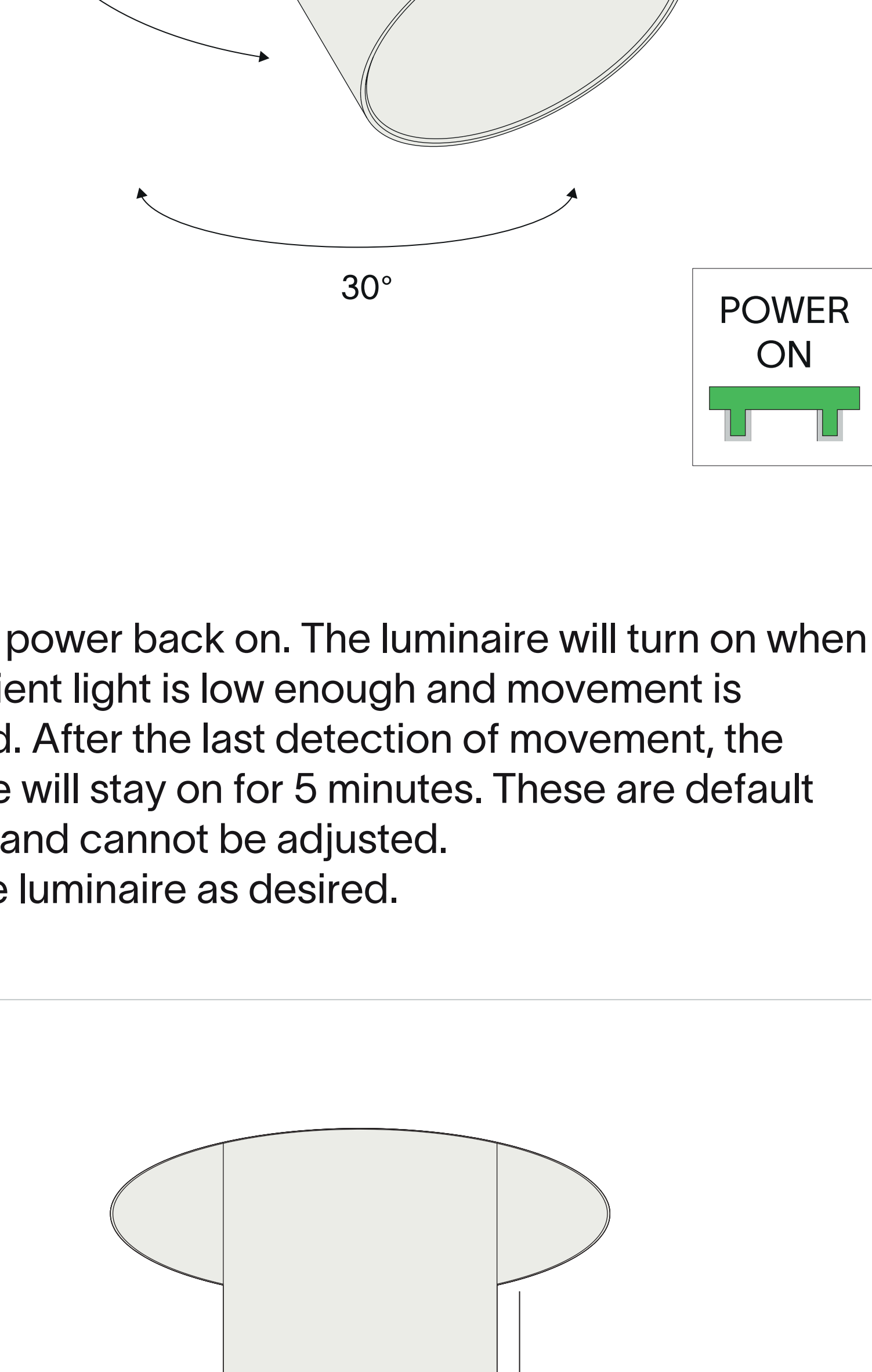
Twist the luminaire to adjust the ventilation flow level.

7



Insert the design ring to lock the ventilation valve.

8



Turn the power back on. The luminaire will turn on when the ambient light is low enough and movement is detected. After the last detection of movement, the luminaire will stay on for 5 minutes. These are default settings and cannot be adjusted.

Twist the luminaire as desired.

9



For maintenance, the luminaire can be removed using duct tape.

thank you for choosing prado

