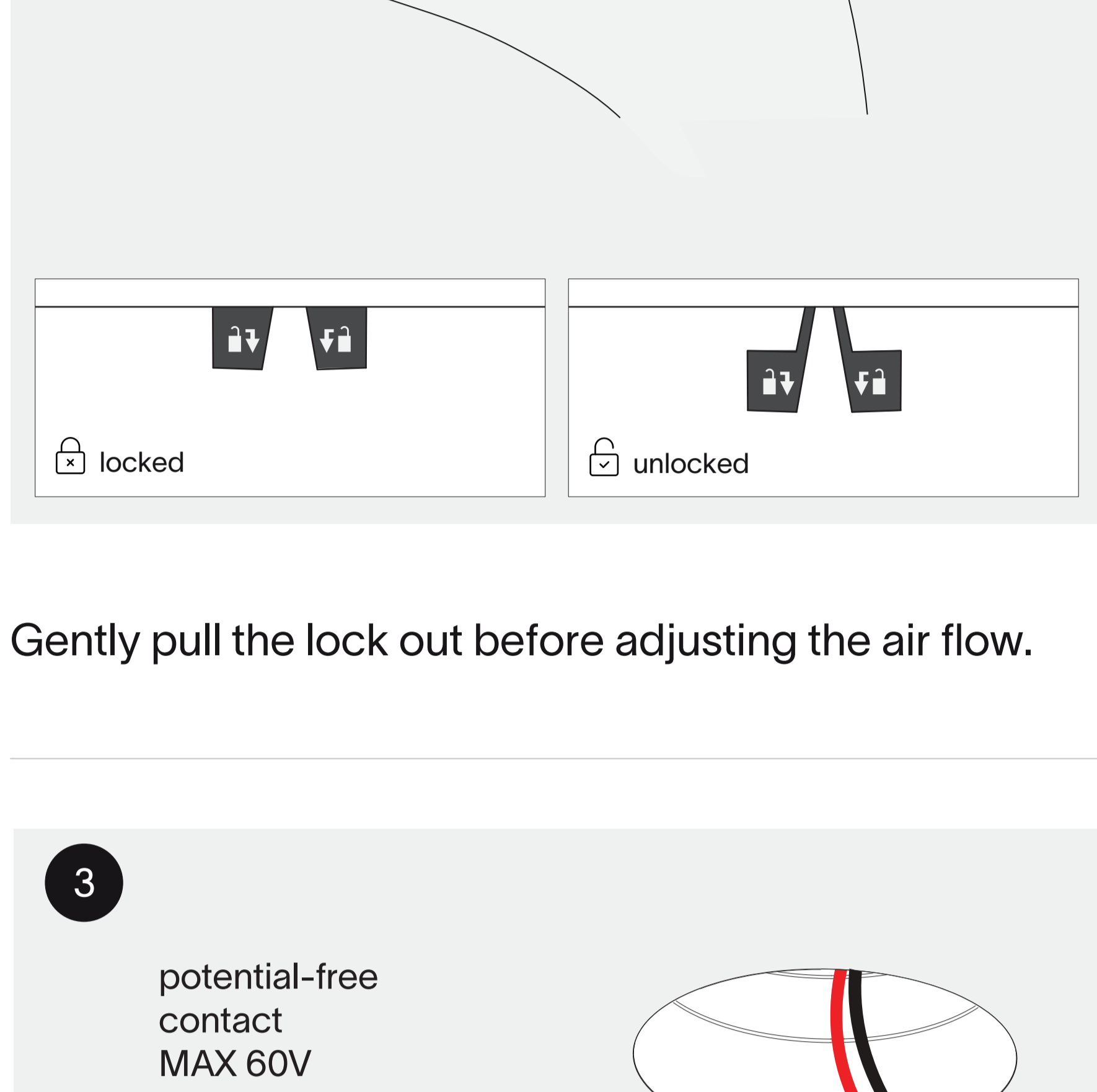


# light+motion+ventilation | short <sup>2.0</sup> installation instruction

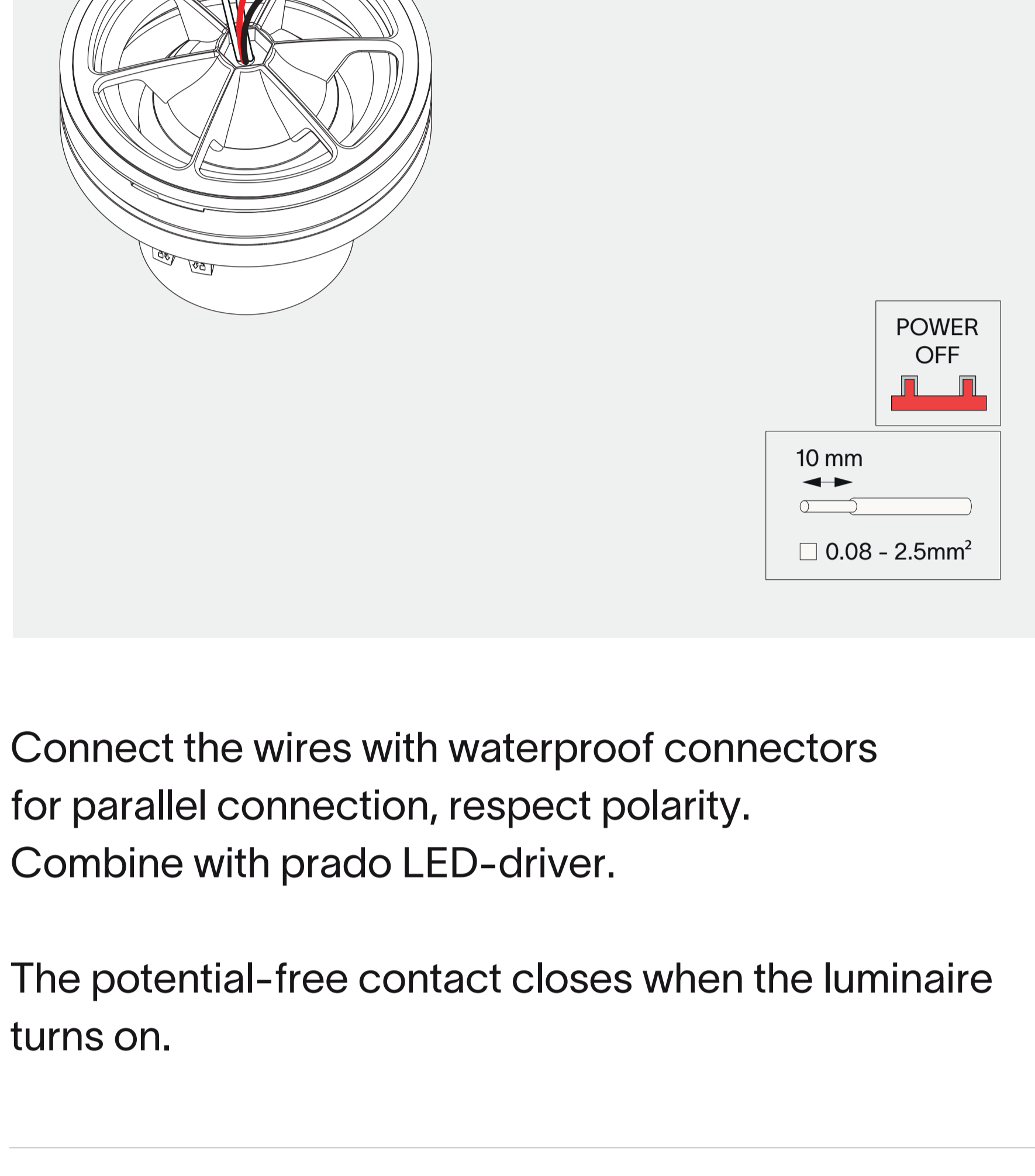


If 50m³/h is required.  
Remove the 25m³/h ring like shown above.

If 25m³/h is required.  
Do not remove the 25m³/h ring like shown above.

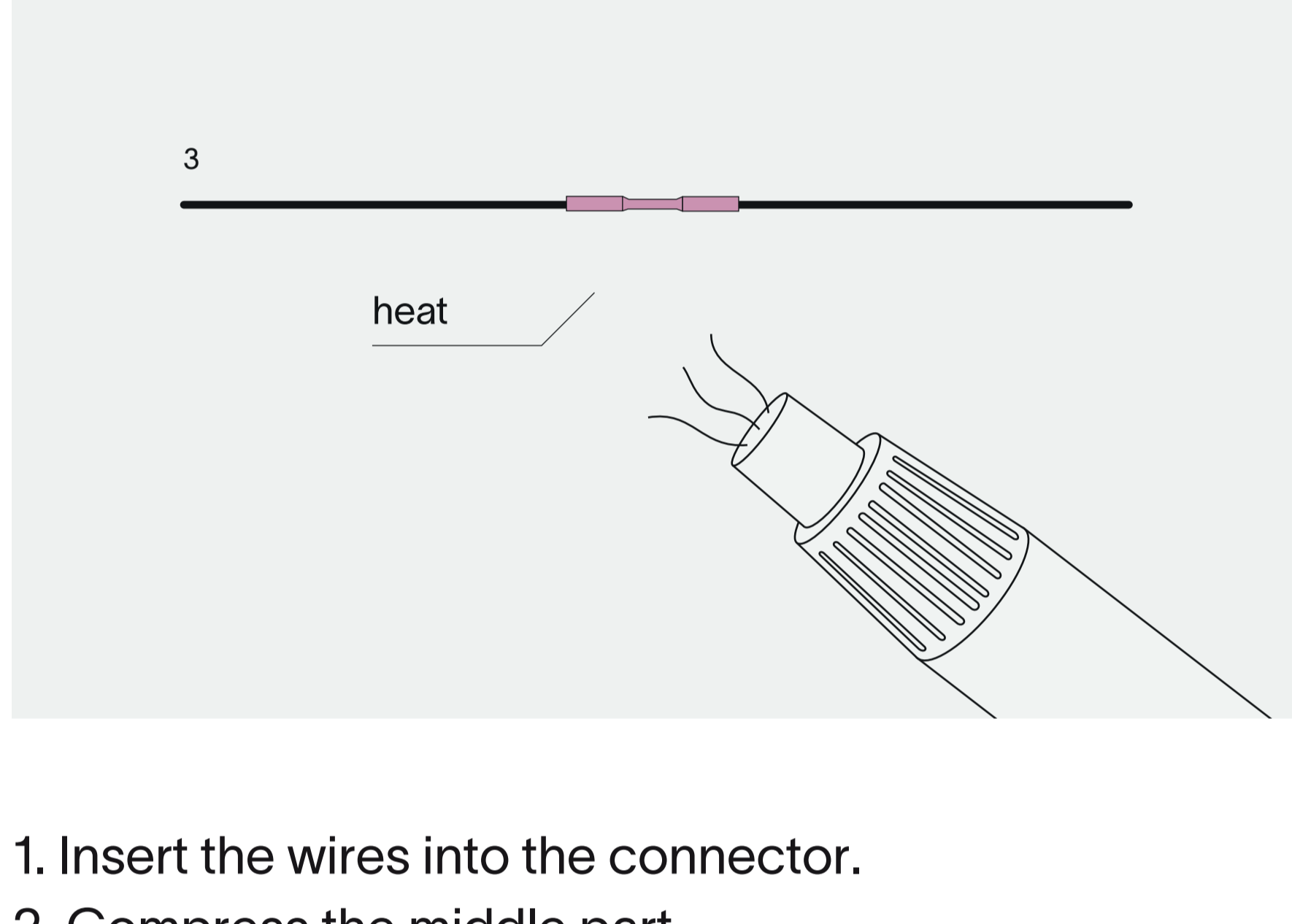


Gently pull the lock out before adjusting the air flow.



Connect the wires with waterproof connectors for parallel connection, respect polarity.  
Combine with prado LED-driver.

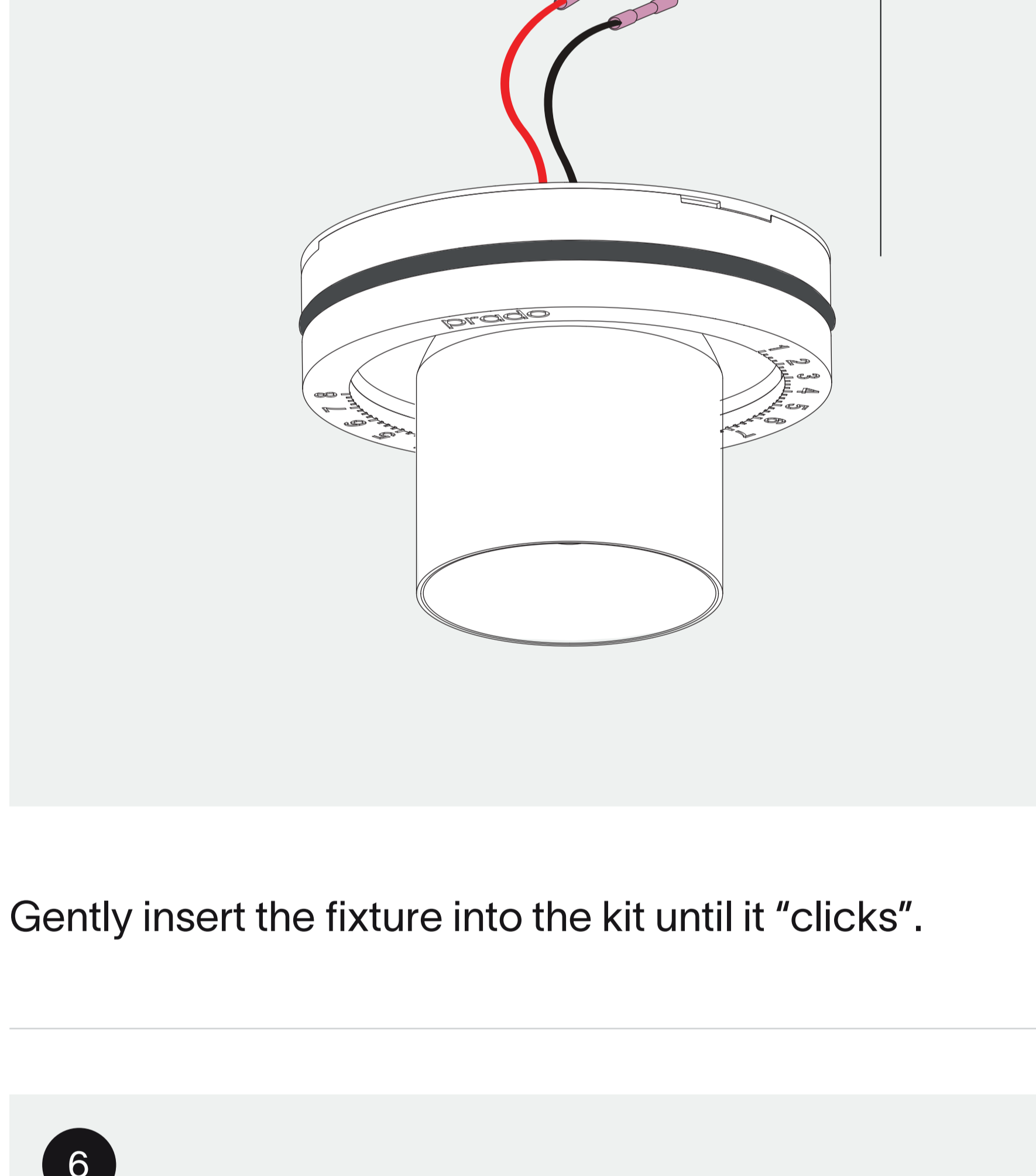
The potential-free contact closes when the luminaire turns on.



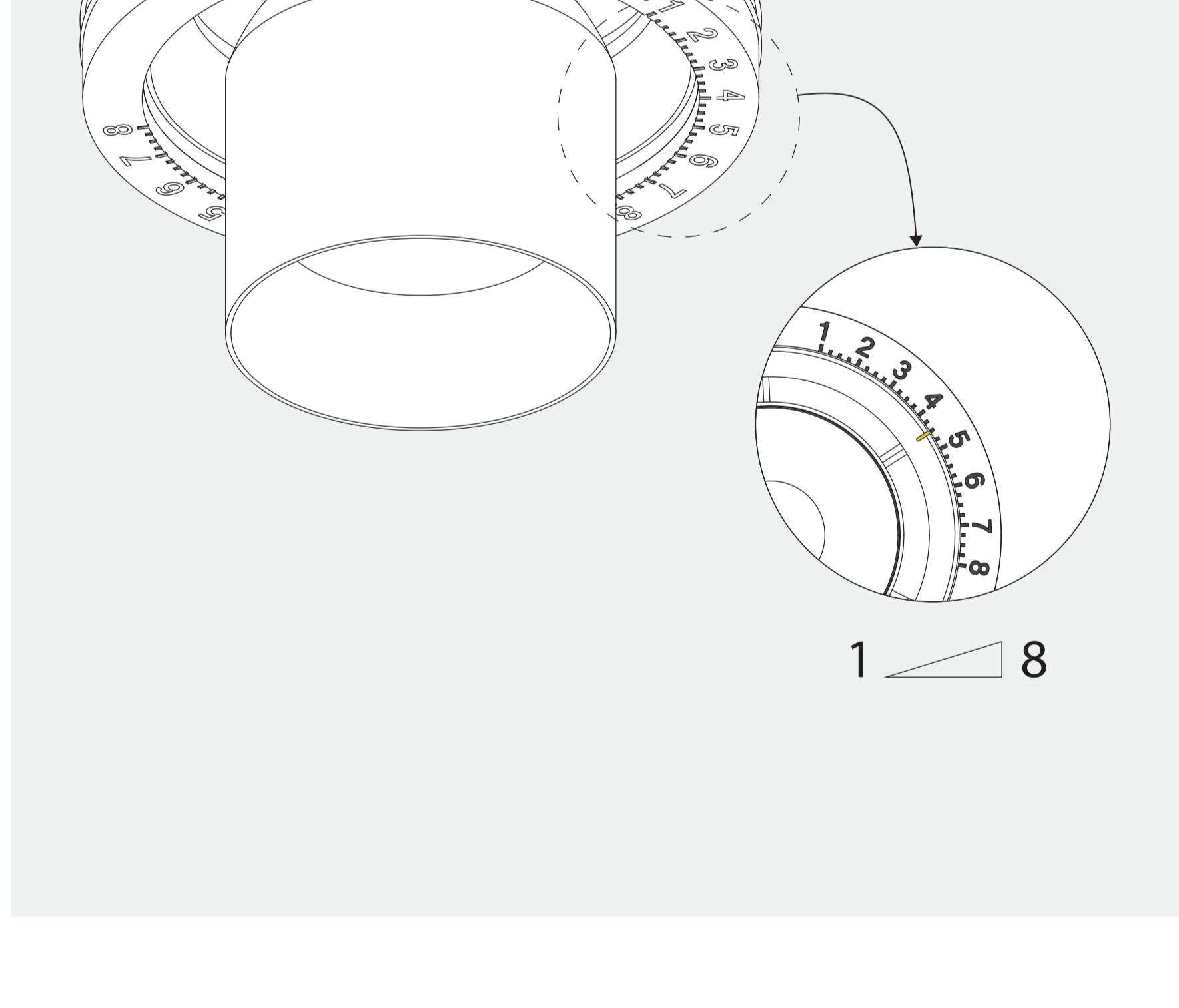
1. Insert the wires into the connector.

2. Compress the middle part.

3. Seal with a heater.

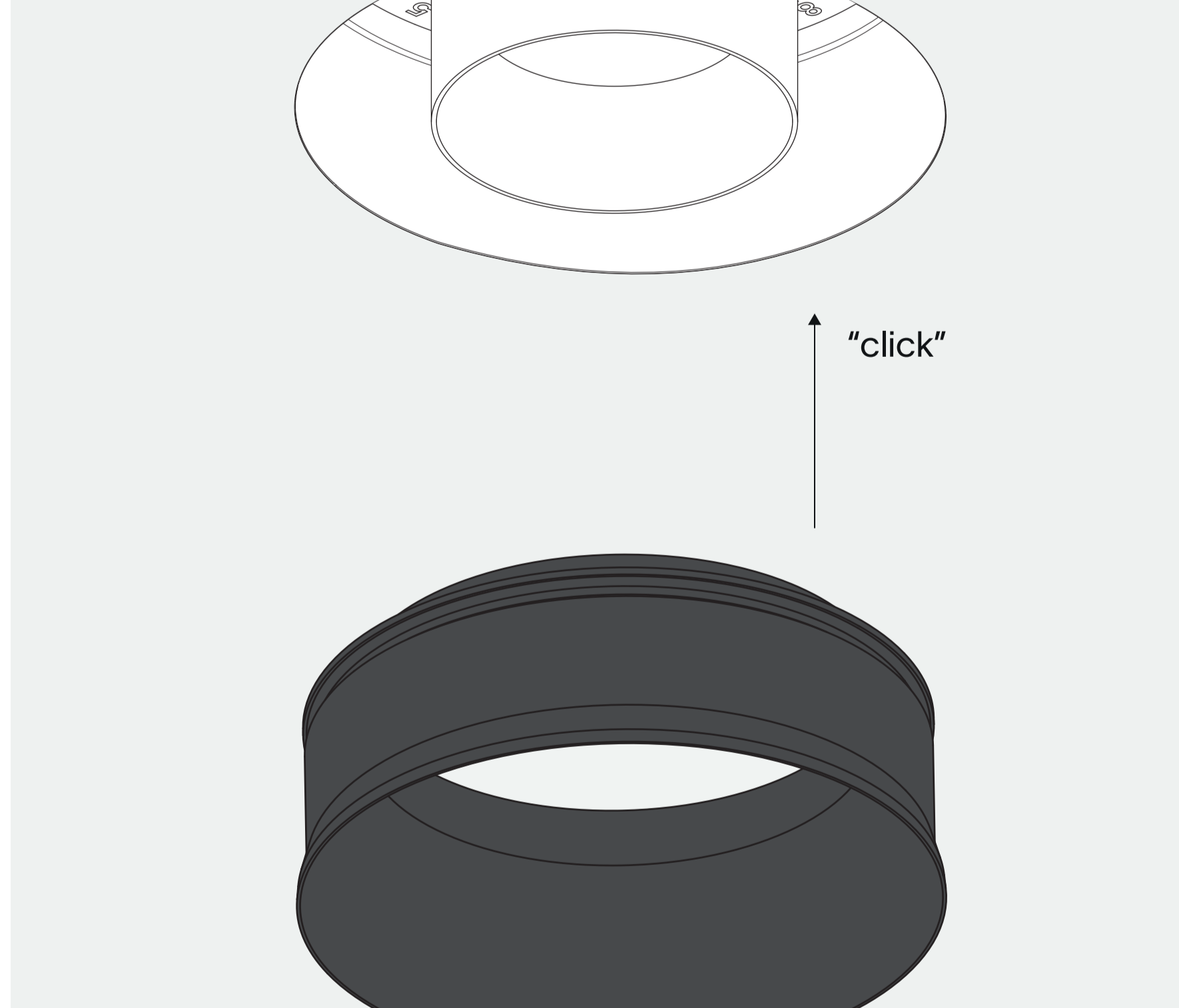


Gently insert the fixture into the kit until it "clicks".

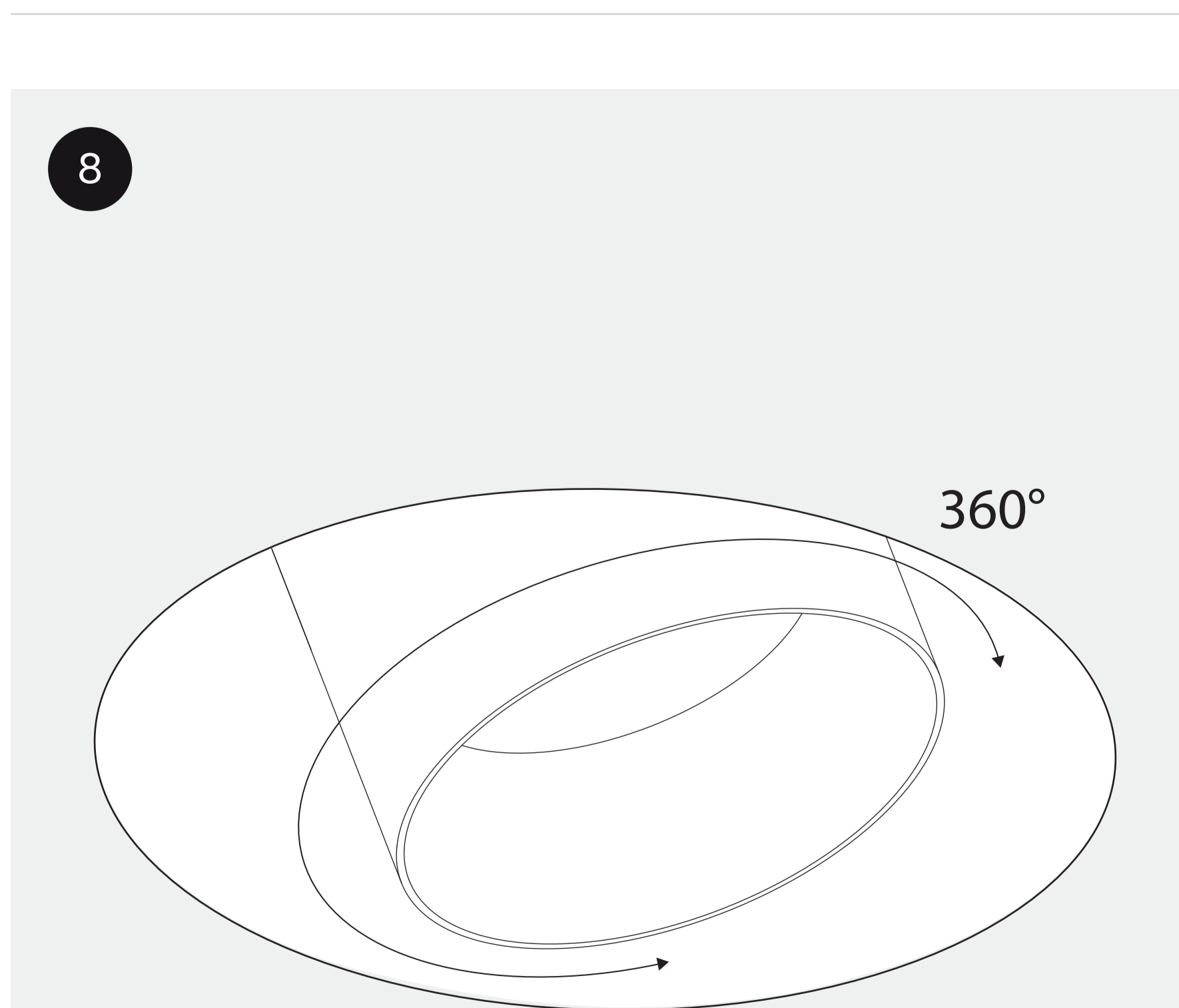


Twist the luminaire to adjust the ventilation flow level.

5 Minutes after the last detection (taking into account ambient light) the luminaire will automatically switch off. These are default settings and cannot be adjusted.



Insert the design ring to lock the ventilation valve.



Twist the luminaire as desired.

thank you for choosing prado

